

December 9, 2016

STATE OF RHODE ISLAND AND PROVIDENCE PLANTATION  
DEPARTMENT OF ADMINISTRATION

DIVISION OF PURCHASES BID NO. 7550996

RHODE ISLAND DEPARTMENT OF TRANSPORTATION

RHODE ISLAND CONTRACT NO.2016-CB-064

FEDERAL-AID PROJECT NO. FAP Nos: BRO-0250(011)

**0031N OLD SAKONNET RIVER BRIDGE DEMOLITION**

Old RI Route 24 Station 182+66.50 to Station 204+45.21

CITY/TOWN OF Portsmouth, Tiverton

COUNTY OF NEWPORT

NOTICE TO PROSPECTIVE BIDDERS

ADDENDUM NO. 2 Prospective bidders and all concerned are hereby notified of the following changes in the Plans, Specifications, Proposal and Distribution of Quantities for this contract. These changes shall be incorporated in the Plans, Specifications, Proposal and Distribution of Quantities, and shall become an integral part of the Contract Documents.

**A. Clarification**

1. RI Standard Specifications for Road and Bridge Construction Section 944

Bidders shall note that Section 944 of the RI Standard Specifications for Road and Bridge Construction, included in the April 2016 Compilation of Approved Specifications, applies to this Contract.

**B. Contract Documents**

1. Page CS-i

Remove Page CS-i (R-1) in its entirety and replace it with revised Page CS-i (R-2) attached to this Addendum No. 2. The index has been revised.

2. Page CS-1

Remove Page CS-1 in its entirety and replace it with revised Page CS-1 (R-1) attached to this Addendum No. 2. The List of Contract Documents has been revised.

3. Pages CS-9 and CS-9a

Remove Page CS-9 in its entirety and replace it with revised Page CS-9 (R-1) and new Page CS-9a attached to this Addendum No. 2. Section 17, "Work Adjacent to and Above Roadways, Waterways and Shoreline" has been revised.

4. CS Appendix A – List of Shop Drawings and Submittals

Remove CS Appendix A in its entirety and replace it with revised CS Appendix A (R-1) attached to this Addendum No. 2. The List of Shop Drawings and Submittals has been revised.

Page 1 of 3

5. Pages JS-i and JS-ii  
Remove Pages JS-i and JS-ii in their entirety and replace them with revised Pages JS-i (R-1) and JS-ii (R-1) attached to this Addendum No. 2. The index has been revised.
6. Page JS-3  
Remove Page JS-3 in its entirety and replace it with revised Page JS-3 (R-1) attached to this Addendum No.2. The shop drawing review period has been revised.
7. Page JS-14  
Remove Page JS-14 in its entirety and replace it with revised Page JS-14 (R-1) attached to this Addendum No.2. The Description and Construction Methods sections have been revised.
8. Pages JS-18a and JS-18b  
Insert new Pages JS-18a and JS-18b attached to this Addendum No. 2. Item Codes 800.9901 “Furnish and Install Exclusion Bird Netting” and 800.9902 “Furnish and Stockpile Exclusion Bird Netting” have been added.
9. Pages JS-35 and JS-35a  
Remove Page JS-35 in its entirety and replace it with revised Page JS-35 (R-1) and new Page JS-35a attached to this Addendum No.2. Section 929 “Field Offices” has been revised.
10. Pages JS-35b, JS-35c and JS-35d  
Insert new Pages JS-135b, JS-35c and JS-35d attached to this Addendum No. 2. Item Code 929.1000 “Field Offices and Laboratory” has been added.
11. Page JS-42a  
Insert new Page JS-42a attached to this Addendum No. 2. Item Code 936.9901 “Mobilization” has been added.

**C. Drawings/Plans - Change/Addition**

1. Sheet 1 of 30  
Remove Sheet 1 in its entirety and replace it with revised Sheet 1 (R-1) attached to this Addendum No. 2. The Index has been revised.
2. Sheet 7 of 30  
Remove Sheet 7 in its entirety and replace it with revised Sheet 7 (R-1) attached to this Addendum No. 2. “Construction and Private Property Access” Notes Note 3 has been revised and Note 4 has been deleted.
3. Sheet 25 of 30  
Remove Sheet 25 (R-1) in its entirety and replace it with revised Sheet 25 (R-2) attached to this Addendum No. 2. The “Maintenance and Protection of Traffic Notes” Note 10 has been added.
4. Sheet 30A of 30  
Insert new Sheet 30A attached to this Addendum No. 2. The Sheet “Exclusion Bird Netting” has been added.

5. Sheet 30B of 30

Insert new Sheet 30B attached to this Addendum No. 2. The Sheet "Navigational Lighting for Existing Bridge Piers No. 10 & No. 11" has been added.

**D. Distribution of Quantities**

1. Pages Index 1 and Index 2

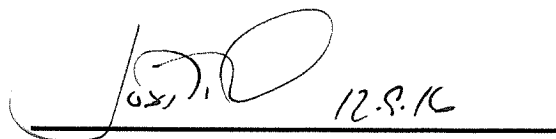
Remove Pages Index 1 and Index 2 in their entirety and replace them with revised Pages Index 1 (R-1) and Index 2 (R-1) attached to this Addendum No. 2. The index has been revised.

2. Page 11 of 13

Remove Page 11 of 13 in its entirety and replace it with revised Page 11 of 13 (R-1) attached to this Addendum No.2. Item Code 936.0100 "Mobilization" has been deleted.

3. Page 13 of 13

Remove Page 13 of 13 in its entirety and replace it with revised Page 13 of 13 (R-1) attached to this Addendum No.2. Item Codes 800.9901 "Furnish and Install Exclusion Bird Netting", 800.9902 "Furnish and Stockpile Exclusion Bird Netting", 936.9901 "Mobilization" and 944.9901 "Diesel Emissions Reduction Program" have been added.

A handwritten signature in black ink, appearing to be 'J. S. O.', is written over a horizontal line. To the right of the signature, the date '12.8.16' is written.

ADDENDUM NO. 2

RI Department of Transportation  
Administrator, Division of Project Management

ATTACHMENTS

**INDEX**  
**SPECIAL PROVISIONS CONSTRUCTION GENERAL**

1	BRIEF SCOPE OF WORK	CS-1
2	LIST OF CONTRACT DOCUMENTS	CS-1
3	LUMP SUM BID ITEMS	CS-2
4	UNIT BID ITEM AND LUMP SUM BID ITEM PAYMENTS	CS-2
5	SCHEDULE LEVEL	CS-2
6	CONTRACTOR QUALIFICATIONS	CS-3
7	UTILITY AND MUNICIPAL NOTIFICATION AND COORDINATION	CS-4
8	ELECTRICAL FACILITIES	CS-6
9	COORDINATION WITH OTHER CONTRACTORS	CS-6
10	SPECIALTY ITEMS	CS-6
11	WINTER SHUTDOWN	CS-6
12	SEQUENCE OF CONSTRUCTION	CS-7
13	SITE ACCESS	CS-7
14	EXISTING BRIDGE WEIGHT RESTRICTIONS AND ACCESS	CS-9
15	STORAGE OF CONSTRUCTION MATERIAL AND/OR EQUIPMENT	CS-9
16	USE OF EXPLOSIVES	CS-9
17	WORK ADJACENT TO AND ABOVE ROADWAYS, WATERWAYS AND SHORELINE	CS-9
18	WORK ZONE LIGHTING	CS-9a
19	SPECIAL REQUIREMENTS FOR TRAFFIC MAINTENANCE AND PROTECTION	CS-10
20	TRAFFIC MANAGEMENT	CS-11
21	INCIDENT MANAGEMENT	CS-11
22	TRAFFIC FINES IN WORK ZONE	CS-12
23	STATE AND LOCAL POLICE COMPENSATION	CS-12
24	CONTRACTOR'S RESPONSIBILITY FOR DAMAGED STORM DRAINS	CS-12
25	CONTRACTOR'S RESPONSIBILITY FOR DAMAGED UTILITY FACILITIES	CS-12
26	INSPECTION ACCESS	CS-12
27	STABILIZATION OF DISTURBED AREAS AND DUST CONTROL	CS-12
28	RIGHT-OF-WAY AND DAMAGE TO PROPERTY	CS-13
29	SHOP DRAWING SUBMITTALS	CS-14
30	ENVIRONMENTAL PERMITS	CS-14
31	TRANSPORTATION MANAGEMENT PLAN	CS-14
32	MAINTENANCE OF MARINE TRAFFIC	CS-15
33	INSURANCE REQUIREMENTS	CS-15

Appendix A – List of Shop Drawings and Submittals

Appendix B – Permits

Appendix C – Transportation Management Plan

Appendix D – Soil Management Plans

## 1. BRIEF SCOPE OF WORK

Rhode Island Contract No. 2016-CB-064 R.I. Federal-Aid Project No. BRO-0250(011), County of Newport, Towns of Portsmouth and Tiverton, Rhode Island, is for the Demolition of the Superstructure and Steel Bents of the Old Sakonnet River Bridge No. 250. The work under this contract shall consist of, but is not limited to: Demolition, Removal and Disposal of the Old Sakonnet River Bridge Superstructure and Steel Bents; Removal and Salvage of Existing Electrical Equipment; Trimming and Fine Grading; Plantable Soil and Seed; Maintenance and Protection of Traffic including temporary closures and detours; Maintenance of Marine Work Zone Delineation; Installation of Temporary and Permanent Navigational Lighting; and all other items of work, complete and accepted within the project limits.

## 2. LIST OF CONTRACT DOCUMENTS

There is one DVD with the Contract Documents including the following contents:

### Contract Specifications

Standard Specifications for Road & Bridge Construction (Amended 2013)  
 Compilation of Approved Specifications (through 2016)  
 Required Contract Provisions – Federal Aid Construction Contracts  
 Rhode Island Standard Details  
 Bridge Standard Details  
 General Provisions  
 Specifications  
 Distribution of Quantities  
 Federal Wage Rates

### Quest Software Information & Files

Quest Lite User Manual  
 Quest Lite Installation  
 Quest Lite Upgrade File  
 Quest Lite Launch (Bid File)

**Plans** - There is one volume of Plans that comprises the contract drawings. The drawings for this volume are compiled as PDF files and are listed as follows:

<u>Drawing No.</u>	<u>Description</u>
1	Cover Sheet
2	Standard Plan Symbols & Standard Legend
3-4	Standard Notes – 1 & 2
5	Job Specific Plan Symbols, Legend and Notes
6	List of Abbreviations & Plan Designations
7-8	Bridge General Notes – 1 & 2
9	Bridge General Plan & Elevation
10-14	Superstructure Sections – Sheet 1 to 5
15-17	Substructure Elevations – Sheet 1 to 3
18	Bent 16 Temporary Shoring Plan and Elevations
19	Pier 6 Temporary Shoring Plan and Elevations
20-23	General Plan No. 1 to 4
24	Construction Access
25-28	Maintenance & Protection of Traffic Plans – Sheet 1 to 4
29-30	Cross Section No. 1 & 2
30A	Exclusion Bird Netting
30B	Navigational Lighting for Existing Bridge Piers No. 10 & No. 11

#### **14. EXISTING BRIDGE WEIGHT RESTRICTIONS AND ACCESS**

The Contractor shall take special notice that the old Sakonnet River Bridge carried a posted weight restriction of 18 Tons total vehicle weight as well as a vehicle axle restriction that is well below statutory loadings. This posting was based on the condition of bridge at the time of its closing in 2012. Since that time, no detailed inspections have been performed to update the condition of the bridge and verify that this load carrying capacity has not decreased.

Based on the Contractor's proposed equipment and methods, he MUST provide calculations bearing the stamp of a Rhode Island Professional Engineer demonstrating that no components of the bridge will be overstressed by his operations. To that end, it is emphasized that all computations MUST account for the reduction in capacity resulting from the deteriorated condition of the various components at the time the calculations are performed. This may require that the Contractor inspect various components of the bridge. Upon request, RIDOT's latest Load Rating Calculations will be made available for the Contractor's review at RIDOT Contracts and Specifications Section. However, the Contractor shall be fully aware that the physical conditions of the bridge are constantly changing; and as a result, the original assumptions in terms of section loss and remaining component capacity reflected in the RIDOT Load Rating Calculations may not be representative of present component conditions. The Contractor may design and install repairs to various components to accommodate his operations.

All costs associated with the inspection, evaluation, and repairs shall be at the sole expense of the Contractor, including access, traffic control, police protection, engineering fees, and any other costs associated with ensuring the safe use of the bridge. In addition, this work will not result in any additional compensation or extension of contract time.

#### **15. STORAGE OF CONSTRUCTION MATERIAL AND/OR EQUIPMENT**

The Contractor shall not store any material or park any vehicles within thirty (30) feet of an open Route 24 travel lane or across utility vaults, driveways, or sidewalk areaways within the project limits at any time during this contract.

Except as indicated in the Contract Documents, there shall be no stockpiling or disposal of soils, construction materials, debris, etc. on the coastal feature, within 50 feet of the inland edge of the coastal feature, or in coastal waters per the stipulations of the Coastal Resource Management Council (CRMC) Assent.

The Contractor shall not store materials or conduct operations outside the contract limits within 200 feet of a coastal feature without the permission of CRMC, which will be the Contractor's responsibility to obtain. Delays associated with the acquisition of such permission will not be considered a basis for a time extension or a waiver of liquidated damages.

#### **16. USE OF EXPLOSIVES**

The use of explosives is not allowed on this project.

#### **17. WORK ADJACENT TO AND ABOVE ROADWAYS, WATERWAYS AND SHORELINE**

To address the safe vehicle, vessel and pedestrian passage during the demolition of the existing bridge, the Contractor shall take any and all measures, including the use of protective shielding and/or netting per the special provisions, to prevent any debris, equipment or materials from falling to the ground or the waterway. There will be no separate payment for this item of work. The cost of this work shall be included in the lump sum items to which the work pertains.

The Contractor shall note the presence of an existing public access along the Portsmouth shoreline to the adjacent former railroad causeway. Access to the former railroad causeway shall be maintained during the demolition of the old bridge to allow for safe pedestrian passage. The Contractor shall

coordinate any required temporary closures of access with the Engineer, CRMC and all other applicable environmental agencies. There will be no separate payment for this item of work. The cost of this work shall be included in the lump sum items to which the work pertains.

**18. WORK ZONE LIGHTING**

Highway lighting shall not be relied upon for work zone lighting. The cost of work zone lighting

**APPENDIX A**  
**LIST OF SHOP DRAWINGS AND SUBMITTALS**

The general list of shop drawings required for this project includes, but is not limited to, the following:

- Conceptual Demolition Plan
- Final Demolition Plan
- Under-Deck Protection
- Photograph and Video Documentation of Demolition Operations
- Pre- and Post-Demolition Hydrographic Surveys
- Post-Demo Subaqueous Inspection Reports
- Navigational Lighting for Existing Bridge Piers
- Buoys for Marine Work Zone Delineation
- Portable Changeable Message Sign
- Health and Safety Plans (HASPs) and Programs
- Soil Erosion and Sediment Control Plan (SESC) Certification

**INDEX  
SPECIFICATIONS - JOB SPECIFIC**

<b><u>CODE</u></b>	<b><u>TITLE</u></b>	<b><u>PAGE</u></b>
101.71	Substantial Completion	JS-1
105.02	Plans and Shop Drawings	JS-2
108.01	Prosecution and Progress	JS-5
108.03	Prosecution and Progress	JS-6
108.1000	Prosecution and Progress	JS-7
109.06	Payment for Work	JS-8
109.07	Partial Payment of Lump Sum Items	JS-10
109.09	Measurement and Payment	JS-11
201.9902	Remove, Stockpile, and Reinstall Existing Shared Use Path Light Pole and Luminaire System	JS-12
201.9905	Remove and Salvage Electrical Equipment	JS-14
209.9901	Sedimentation Control for Catch Basins	JS-15
212.1000	Maintenance and Cleaning of Erosion and Pollution Controls	JS-18
800.9901	Furnish and Install Exclusion Bird Netting	JS-18a
800.9902	Furnish and Stockpile Exclusion Bird Netting	
803.99	Under-Deck Protection	JS-19
803.9901	Remove and Dispose Portions of Old Sakonnet River Bridge	JS-21
907.1000	Dust Control	JS-27
926.9901	Buoys for Marine Work Zone Delineation	JS-28
926.9903	Navigational Lighting for Existing Bridge Piers	JS-31
928	Truck Mounted Attenuator (TMA) with Truck Mounted Flashing Arrow Board (TMFAB)	JS-32
929	Field Offices	JS-35
929.1000	Field Offices and Materials Laboratory	JS-35b
934.9901	Photographs and Video of Demolition Operations	JS-36

**INDEX  
SPECIFICATIONS - JOB SPECIFIC**

<b><u>CODE</u></b>	<b><u>TITLE</u></b>	<b><u>PAGE</u></b>
934.9901	Photographs and Video of Demolition Operations	JS-36
934.9902	Pre-Demolition Hydrographic Survey	JS-38
934.9903	Post-Demolition Hydrographic Survey	
934.9904	Post-Demolition Subaqueous Inspection	JS-41
936.9901	Mobilization	JS-42a
937.1000	Maintenance and Movement of Traffic Protection Devices	JS-43
938.1000	Price Adjustments	JS-44
943.0200	On The Job Training	JS-45
950.9901	Water Transportation for the Engineer	JS-50
L.01	Loam, Plantable Soil or High Organic Soil	JS-51
L.02.1000	Seeding	JS-52
L05.9902	Semi-Permanent Erosion Control Blanket	JS-53

All shop drawings requiring engineering, calculations and dimensioning shall be stamped by a Rhode Island Registered Professional Engineer. The stamping of shop drawings shall be in accordance with the applicable requirements of the Rhode Island Board of Registration for Professional Engineers, or other Boards of Professional Registration, as applicable.

All shop drawings will be reviewed by the Engineer and returned to the Contractor for appropriate action within thirty (30) calendar days of the submission.

Shop drawings that are found to be erroneous, lacking information necessary to control construction, or not in conformance with accepted design criteria will be disapproved and returned to the Contractor. The Contractor shall address the Engineer's comments and resubmit revised shop drawings.

Shop drawings must be approved by the Engineer prior to commencement of the work involved. Such review and approval does not relieve the Contractor of any responsibility under the Contract for the successful completion of the work to the satisfaction of the Engineer. The Engineer's responsibility is solely for the limited purpose of reviewing and approving the shop drawings for general conformance with the design intent of the project and general compliance with the information given in the Contract Documents. The Contractor retains sole responsibility for the accuracy of the shop drawings and all associated material; for confirming and correlating all quantities and dimensions; for selecting fabrication processes and techniques of construction; for means and methods of construction; for coordinating work with all other work; and for performing all work in a safe and satisfactory manner. There shall be no claims for additional payment by the Contractor nor will there be an extension of the project Completion Dates for any corrective actions necessary as a result of shop drawing errors and omissions.

Every copy of the shop drawings shall bear a stamp by the Contractor indicating that they are complete, have been checked and that the Contractor has determined and verified all materials, field measurements and field construction criteria related thereto, and has checked and coordinated the information contained within this submittal with the requirements of the Contract Documents and as required with all trades and all public agencies involved. Sole responsibility for the shop drawings shall remain with the Contractor. Each of the Contractor's stamps shall be signed by the responsible authorized representative of the Contractor. Shop drawings submitted to the Engineer without the Contractor's stamp and signature will be considered incomplete and returned to the Contractor for conformance with this requirement.

There shall be no claims for additional payment by the Contractor, nor will there be an extension of the project Completion Dates for delays resulting from resubmissions due to incomplete shop drawings; for the time taken by the Contractor to submit revised shop drawings caused by an erroneous submission; or by a previous submission either

**CODE 201.9905  
REMOVE AND SALVAGE ELECTRICAL EQUIPMENT**

**DESCRIPTION:**

This work consists of removing and salvaging all existing electrical equipment and materials on the old Sakonnet River Bridge No. 250. These items include, but are not limited to, double davit light poles, luminaires, electrical cable, junction boxes, rigid steel galvanized conduit, navigation lighting system and control cabinet in Tiverton, handhole rings and covers, wiring throughout the entire remaining portion of the old Sakonnet River Bridge from the West Abutment in Portsmouth to Bent 17 in Tiverton (as indicated on the Plans), and the electrical cabinet on a concrete pad adjacent to Bent 16, as directed by the Engineer and in accordance the requirements of the Contract Documents and these Special Provisions.

**MATERIALS:** Not applicable.

**CONSTRUCTION METHODS:**

Electrical equipment shall be removed and salvaged in accordance with the Contractor's approved Demolition Plan.

All material shall be delivered to the RIDOT Maintenance Facility at 360 Lincoln Avenue in Warwick, RI. The salvaged electrical equipment shall become property of the State.

**METHOD OF MEASUREMENT:** This item will not be measured for payment.

**BASIS OF PAYMENT:** "ITEM CODE 201.9905 REMOVE AND SALVAGE ELECTRICAL EQUIPMENT" will be paid for at the contract unit price per "Lump Sum" price as listed in the Proposal. The price so-stated will constitute full and complete compensation for all labor, materials, tools, equipment, and all incidentals required to finish the work as described by this Special Provision and elsewhere in the Contract Documents, complete in place and accepted by the Engineer.

Partial payments for this Lump Sum item will be made in accordance with Special Provision Code 109.07.

**CODE 800.9901 FURNISH AND INSTALL EXCLUSION BIRD NETTING  
CODE 800.9902 FURNISH AND STOCKPILE EXCLUSION BIRD NETTING**

**DESCRIPTION:**

Work under this item shall consist of furnishing exclusion bird netting and any associated hardware, installing exclusion bird netting at the locations shown on the Contract Drawings and as directed by the Engineer, maintaining all installed exclusion bird netting and stockpiling exclusion bird netting.

The exclusion bird netting shall be installed within thirty (30) calendar days of the Notice to Proceed being issued. The Contractor shall note that the "Work Restrictions Due to Peregrine Falcon Nesting" notes on Contract Drawing Sheet 8 apply to this work.

The Contractor shall furnish and stockpile additional exclusion bird netting to be readily available for installation should any birds attempt to nest outside the areas shown on the Contract Drawings to be netted. Any installation of additional exclusion bird netting shall be by the direction of the Engineer. The furnishing of the additional exclusion bird netting will be paid under Item Code 800.9902 "Furnish and Stockpile Exclusion Bird Netting" and its installation will be paid by Force Account.

**MATERIALS:**

The netting material shall be polyethylene that is specifically marketed for bird pest control with  $\frac{3}{4}$ " openings, and shall have a minimum 10-year manufacturer warranty.

The netting to be installed under Item Code 801.9901 "Furnish and Install Exclusion Bird Netting" shall be comprised of pre-manufactured section sizes selected by the Contractor to adequately cover the specified locations. The netting to be stockpiled under Item Code 800.9902 "Furnish and Stockpile Exclusion Bird Netting" shall consist of pre-manufactured fifty-foot (50') x fifty-foot (50') sections. The stockpiled netting shall be stored on-site or off-site at a location approved by the Engineer. No additional payment will be made for off-site storage.

Any unused netting paid under Item Code 800.9902 "Furnish and Stockpile Exclusion Bird Netting" at the completion of the project shall become property of the State and shall be delivered to the RIDOT Highway & Bridge Maintenance Division, 360 Lincoln Avenue, Warwick. No additional payment will be made for this delivery.

**CONSTRUCTION METHODS:**

The Contractor shall furnish and install the bird netting at the locations shown on the Contract Drawings to deter birds from nesting on the steel truss. The bird netting shall extend from the top round steel railing around the sides and underside of the truss up to the top round steel railing on the other side of the bridge. Additionally, the netting shall extend across the width of the bridge below from the concrete deck to the bottom truss chord to “close” the netted area. The netting shall be overlapped and secured to itself per manufacturer’s recommendations and shall be secured to the bridge in accordance with its manufacturer’s recommendations and shall be secured to adequately prevent birds from entering the excluded area along the edges of the netting.

**SUBMISSIONS:**

The Contractor shall submit the manufacturer specifications and warranty information to the Engineer for the record. This submission will not be subject to the shop drawing review and approval process.

**METHOD OF MEASUREMENT:**

Item Code 800.9901 “Furnish and Install Exclusion Bird Netting” will be measured by the number of square feet actually installed excluding overlaps in accordance with the Plans, this specification and/or as directed by the Engineer.

Item Code 800.9902 “Furnish and Stockpile Exclusion Bird Netting” will be measured by the number of stockpiled square feet actually delivered in accordance with the Bid Proposal Form and/or as directed by the Engineer.

**BASIS OF PAYMENT:**

The accepted quantity of Item Code 800.9901 “Furnish and Install Exclusion Bird Netting” will be paid at its respective contract unit price per square foot as listed in the Bid Proposal Form. The price so-stated constitutes full and complete compensation for all labor, materials and equipment, and all other incidentals required to finish the work, complete and accepted by the Engineer.

The accepted quantity of Item Code 800.9902 “Furnish and Stockpile Exclusion Bird Netting” will be paid at its respective contract unit price per square foot as listed in the Bid Proposal Form. The price so-stated constitutes full and complete compensation for all labor, materials and equipment, and all other incidentals required to finish the work, complete and accepted by the Engineer.

**CODE 929  
FIELD OFFICES**

Unless otherwise modified elsewhere in the Contract Documents, Section 929 of the Rhode Island Standard Specifications for Road and Bridge Construction is revised as follows:

Add the following new paragraphs to Section 929.01 **DESCRIPTION**:

The location of the Field Offices shall be the former Chase Marina (now the property of the State of Rhode Island) located at 169 Riverside Drive in Tiverton, Rhode Island (AP 6-6 BLK 72 Lot 12).

All equipment provided on this project for the Field Office shall be new.

Delete Sections 929.03.1b **Sanitary Sewer Outfall** and 929.03.1c **Security**, and replace them with the following:

**b. Sanitary Sewer Outfall.** The former Chase Marina property is equipped with an individual disposal sewage system that has been approved by the R.I. Department of Environmental Management. Disposal of sanitary wastes must conform to the applicable requirements of both the R.I. Department of Environmental Management and municipal regulations.

**c. Security.** The field office shall be secured with adequate gates and locks. The Contractor shall change and replace all existing locks on the field office building with new locks and deadbolts, all keyed the same, at the locations specified by the Engineer. The Contractor shall provide the Engineer with 24 copies of the keys. Outside area floodlighting, together with appropriate timers or motion sensors, shall be provided on all four sides of the building.

Add Section 929.03.2f **Network Internet Service**:

**f. Network Internet Service.** The Contractor shall provide and install a secure high speed internet service capable of interconnecting and networking a combination of 24 computers, printers, copiers, and scanners, compatible with the equipment as specified in Section 929.1000.

Delete Subsection 929.03.7b. **Custodial** in its entirety and replace it with the following:

**b. Custodial.**

1. Weekly trash removal.
2. Bi-weekly floor cleaning.
3. Bi-monthly window cleaning.
4. Snow plowing, sanding and removal of snow at parking areas and walks.
5. Replacement of supplies as required to maintain office equipment, both existing and new, and sanitary facilities.
6. Pumping of septic system on a yearly basis, or when necessary to maintain functional operation, as directed by the Engineer.

Add the following additional furnishing to Section 929.03.5 **Special Requirements for Filed Office:**

- Three (3) additional office desks
- Three (3) additional swivel desk chairs
- Four (4) additional round waste baskets
- Ten (10) Folding Type Chairs
- One (1) Large Conference Table, minimum top dimensions 42" x 96"
- One (1) 4-drawer fireproof file cabinet

Upon completion of the project, the above equipment, including all warranties, will become the property of the Rhode Island Department of Transportation.

## 929.1000

### FIELD OFFICES AND MATERIALS LABORATORY

Replace **Section 929.1000; Field Offices and Materials Laboratory** of the RIDOT Standard Specifications for Road and Bridge Construction (Amended 2013) and all subsequent Compilation of Approved Specifications in their entirety with the following:

DESCRIPTION: The items of computer equipment and software to be provided for this Contract in accordance with Para. c. of Subsection 929.03.5; Special Requirements for Field Office, of the RI Standard Specifications for Road and Bridge Construction, 2013 Edition, consist of the following:

1. One Desk Jet color printer capable of printing standard and custom paper sizes from 3 by 5 inches to 11 by 17 inches. Print quality shall be 1200 by 1200 dpi minimum resolution for black and white printing and 4800 X 1200 optimized dpi for color printing. It shall be capable of printing up to 20 ppm (black and white) and up to 15 ppm (color). The printer must be setup and shared by computers, via a USB Hub with all cables.
2. One laser printer capable of printing standard and custom paper sizes from 3 by 5 inches to 11 by 17 inches. Print quality shall be 1200 by 1200 dpi minimum resolution and have a minimum of 64 MB RAM. The printers must be setup and shared by all computers in field office.
3. Two (2) IBM compatible laptop computers with second generation Intel Core i5-2450M processor (2.50 GHz with Turbo Boost 2.0 up to 3.1 GHZ minimum); 250 GB (5400 rpm) hard drive (minimum); 17" LCD screen (minimum); 6 GB of RAM (minimum); 10/100 network interface card; 1.44 MB 3.5" floppy disk drive; CD-RW/DVD drive; 56K KPS modem; wireless network card, broadband internet access (3Mbps nominal connection speed) and Internet Service Provider, 9 cell primary battery, AC/DC power adaptor, extra 9 cell battery, and carrying bag. Installed software shall include: Microsoft Windows 10 Professional with the latest service packs and security updates, Microsoft Office Professional (2013 version or better) with latest service packs, McAfee Anti Virus (2016 or better) with subscription support for the life of the project, Adobe Acrobat X Professional 2016 or better, and AutoCAD 2017 (or better).
4. Two (2) Docking Stations with a minimum of the following: 1 Ethernet RJ-45 port, 4 USB 2.0 ports, 2 PS/2 ports, 1 serial port and 1 parallel port and a compatible monitor

stand, four (6) 101 key enhanced keyboards, four (6) optical mouse with scroll wheel, and four (6) 24" flat panel LCD monitors.

5. Three (3) IBM compatible desktop computers (one utilized as dedicated server to network and backup) with an Intel Core i7-3930K processor (12M Cache, up to 3.8 GHZ minimum) 250 GB (5400 rpm) hard drive (minimum); 22" LCD screen (minimum); 1 6.0 GB of RAM (minimum); 10/100 network interface card; CD-RW/DVD drive; and eight (8) 22" flat panel LCD monitors. wireless network card, broadband internet access (3Mbps nominal connection speed) and Internet service Provider. Installed software shall include: Microsoft Windows 7 Professional with the latest service packs and security updates, Microsoft Office Professional (2013 version or better) with latest service packs, McAfee Anti Virus (2016 or better) with subscription support for the life of the project. Adobe Acrobat X Professional 2016 or better.

6. One desktop color copying machine with an automatic document feeder and sorter (capable of scanning with OCR), copy up to 11" X 17" paper size. With wireless network connection capabilities or a compatible machine approved by the Engineer.

7. One (1) approved facsimile machine meeting the following minimum standards: desktop transceiver; automatic fax/tel switch with only one phone line needed; 10 page document feeder; 9600 bps modem speed with automatic fallback; answering machine interface; 20 location capacity; one-touch dial with 16 locations; PSTN line connection; monitor speaker; 16 character LCD size; local copy function; status/error indicators; transmit and receive confirmation reports; no more than 15 pounds in weight; 120V-60 HZ power requirement; built-in handset; image control resolution of 200 x 100 ipi at standard, 200 x 200 ipi at fine, and 200 x 400 ipi at super-fine; 16 level gray scale; automatic redial 2 times at 3 minute intervals and 128 KB memory capacity. The Contractor shall provide a separate phone line for the facsimile machine.

8. The Contractor shall provide maintenance and supplies for the life of the project. Supplies for both new and existing field office equipment shall include but, are not limited to, 3.5" DSHD floppy disks, 700 MB CD-R disks with jewel cases, CD storage case, toner, inks, all paper, etc. All supplies shall be provided with the original installation of the computer equipment and as required, as soon as possible after notification by the Resident Engineer.

10. The contractor shall provide Two (2) digital cameras to the Engineer for documentation purposes. The camera shall be a Sony Cyber-Shot Digital Still Camera

Sony 16.1 MP Digital Still Camera with Carl Zeiss Vario-Tessar 5x Wide-Angle Optical Zoom Lens and 2.7-inch LCD or better with rechargeable battery pack (NP-BK1,) battery charger, dedicated A/V cable, dedicated USB cable, CD-ROM PMB (Picture Motion Browser,) 8 GB memory card, wrist strap, ACC-CBK accessory kit which includes nylon carrying case and extra battery.

11. The contractor shall provide three (3) 10.0 Gigabytes minimum flash drives.
12. The Contractor shall provide one Two terabyte minimum external hard drives for shared network storage and backup.
13. The contractor shall provide One Auto start, HD Cross Shredder capable of receiving a minimum of 15 sheets simultaneously along with CD's and staples.
14. The contractor shall provide Surge Protectors for all of the above equipment.
15. All equipment and software shall be new when received by the RIDOT Construction Section.
16. The contractor shall provide unlimited field office network access including but not limited to All Standards, guidelines, publications, and specifications referenced in the contract, such as AASHTO, ASTM, and LRFD.
17. Upon completion of the project, the computer equipment including all warranties, software, and cameras will become the property of the Rhode Island Department of Transportation.

**CODE 936.9901  
MOBILIZATION**

**DESCRIPTION:**

This work consists of those efforts necessary for the movement of the Contractor's personnel and equipment to the project site and for the establishment of all the Contractor's field offices, buildings and other facilities required for the performance of the Contract.

**MATERIALS:** Not applicable.

**CONSTRUCTION METHODS:** Not applicable.

**METHOD OF MEASUREMENT:** This work will be measured for payments as follows:

- a. **First Payment.** The first payment of 50 percent of the lump sum bid price for Mobilization or 5% of the total contract amount without mobilization, whichever is the lesser, will be made on the first progress payment.
- b. **Second Payment.** The second payment of 35 percent of the lump sum price for Mobilization or 3.5 percent of the total contract amount with mobilization, whichever is the lesser, will be made when the progress payment estimate of the amount earned, not including the amount earned for mobilization, is 5 percent of the total contract amount without mobilization.
- c. **Third Payment.** The third payment of 15% of the lump sum price for Mobilization or 1.5 percent of the total contract amount with mobilization, whichever is the lesser, will be made when the progress payment estimate of the amount earned, not including the amount earned for mobilization, is 10 percent of the total contract amount without mobilization.
- d. **Final Payment.** Upon completion of all the work on the project, including demobilization, payment of any amount bid for Mobilization in excess of the total amount previously paid, will be paid.

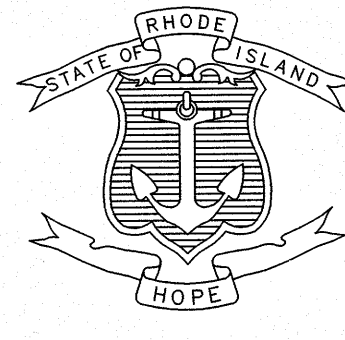
**BASIS OF PAYMENT:** "Mobilization" will be paid for at the contract lump sum price as listed in the Proposal. The price so-stated constitutes full and complete compensation for all labor, materials and equipment and other incidentals required to establish the Contractor's facilities at the site and, at the conclusion of the contract, for the complete removal thereof.

No lump sum breakdown will be required for this item of work.

# INDEX

SHEET NO.	SHEET DESIGNATION	DESCRIPTION
1	-	COVER SHEET
2	G-1	STANDARD PLAN SYMBOL & STANDARD LEGEND
3	G-2	STANDARD NOTES -1
4	G-3	STANDARD NOTES - 2
5	G-4	JOB SPECIFIC PLAN SYMBOLS, LEGEND AND NOTES
6	G-5	LIST OF ABBREVIATIONS & PLAN DESIGNATIONS
7	G-6	BRIDGE GENERAL NOTES - 1
8	G-7	BRIDGE GENERAL NOTES - 2
9	G-8	BRIDGE GENERAL PLAN & ELEVATION
10	D-1	SUPERSTRUCTURE SECTIONS SHEET 1 - SPANS 1 TO 9
11	D-2	SUPERSTRUCTURE SECTIONS SHEET 2 - SPANS 10 TO 12
12	D-3	SUPERSTRUCTURE SECTIONS SHEET 3 - SPAN 11
13	D-4	SUPERSTRUCTURE SECTIONS SHEET 4 - SPANS 13 TO 17
14	D-5	SUPERSTRUCTURE SECTIONS SHEET 5 - TYPICAL ON RAMP
15	D-6	SUBSTRUCTURE ELEVATIONS SHEET 1 - BENTS 1 & 2
16	D-7	SUBSTRUCTURE ELEVATIONS SHEET 2 - BENTS 4,5 & 13 TO 17
17	D-8	SUBSTRUCTURE ELEVATIONS SHEET 3 - BENTS 1L & 2L
18	D-9	BENT 16 TEMPORARY SHORING PLAN AND ELEVATIONS
19	D-10	PIER 6- TEMPORARY SHORING PLAN AND ELEVATIONS
20	GP-1	GENERAL PLAN No. 1 - WEST APPROACH AND SPANS 1 TO 7
21	GP-2	GENERAL PLAN No. 2 - SPANS 7 TO 10
22	GP-3	GENERAL PLAN No. 3 - SPANS 10 & 11
23	GP-4	GENERAL PLAN No. 4 - SPANS 11 TO 17, 1L, AND 2L
24	CA-1	CONSTRUCTION ACCESS - WEST APPROACH FROM RI ROUTE 24
25	MPT-1	MAINTENANCE & PROTECTION OF TRAFFIC PLAN No. 1
26	MPT-2	MAINTENANCE & PROTECTION OF TRAFFIC PLAN No. 2
27	MPT-3	MAINTENANCE & PROTECTION OF TRAFFIC PLAN No. 3
28	MPT-3	MAINTENANCE & PROTECTION OF TRAFFIC PLAN No. 4
29		ROUTE 24 CROSS SECTION NO. 1
30		ROUTE 24 CROSS SECTION NO. 2
30A		EXCLUSION BIRD NETTING
30B		NAVIGATIONAL LIGHTING FOR EXISTING BRIDGE PIERS No. 10 & No. 11

# STATE OF RHODE ISLAND

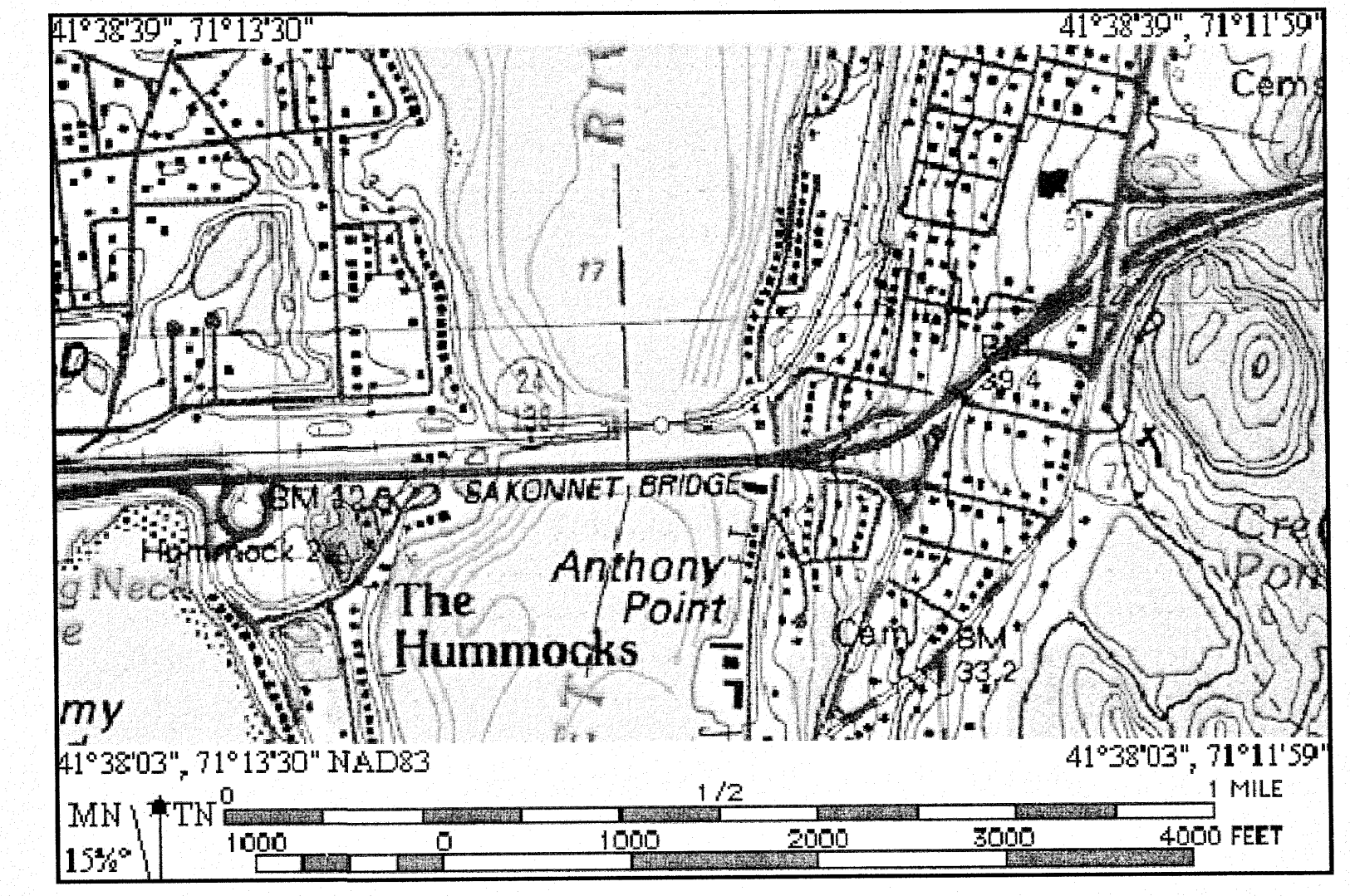


## DEPARTMENT OF TRANSPORTATION

### PLAN, PROFILE AND SECTIONS OF PROPOSED BRIDGE DEMOLITION

# OLD SAKONNET RIVER BRIDGE No. 250

## CONTRACT 2 - SUPERSTRUCTURE AND STEEL BENT DEMOLITION



LOCATION MAP  
NOT TO SCALE

PORTSMOUTH AND TIVERTON, RHODE ISLAND  
COUNTY OF NEWPORT

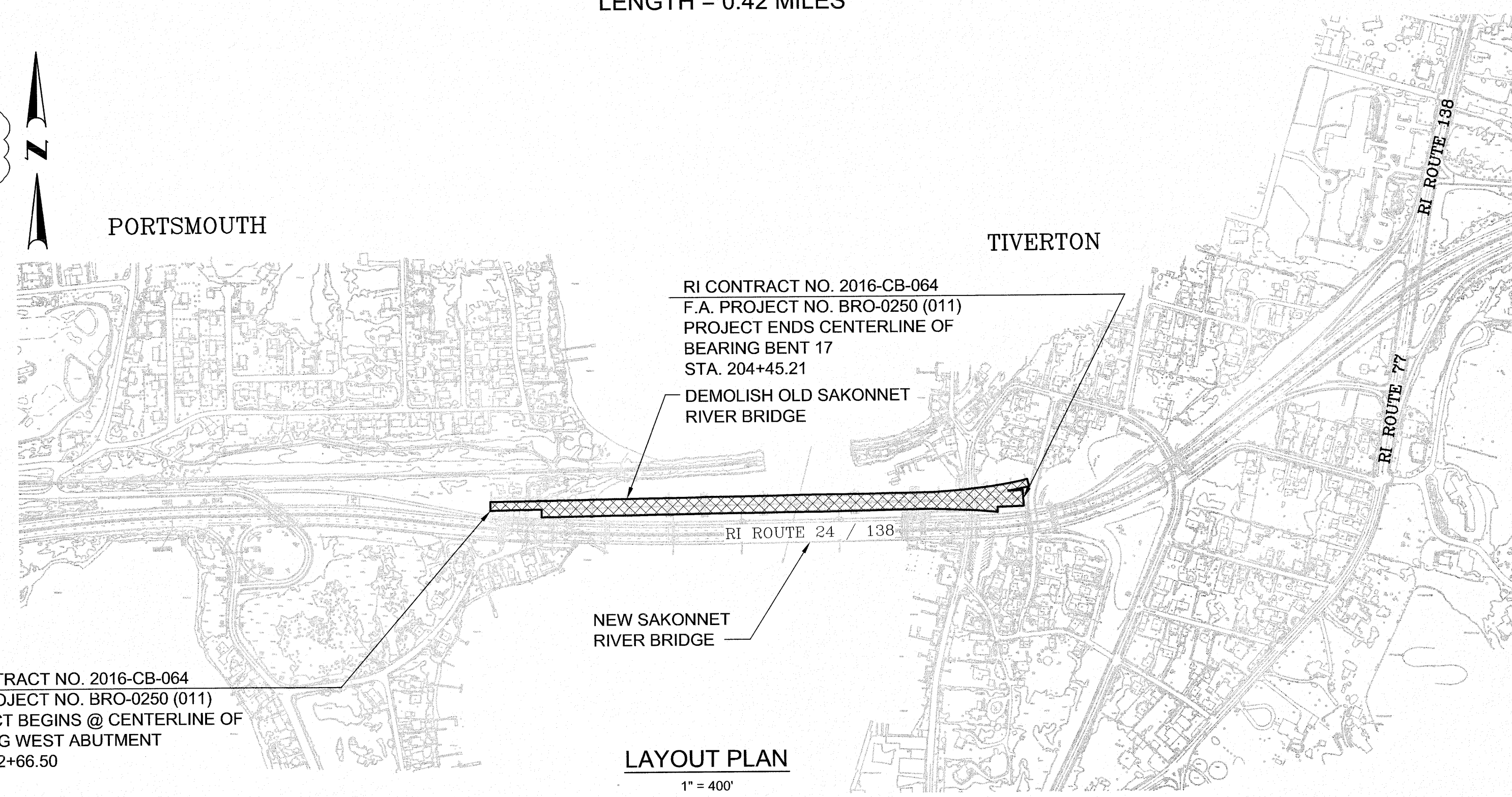
R.I. CONTRACT NO. 2016-CB-064 F.A. PROJECT NO. BRO-0250 (011)

LENGTH = 0.42 MILES

DESIGN	DESIGNATION
2016 AADT =	41,000 V.P.D.
2036 AADT =	51,000 V.P.D.
2016 DHV =	4,470 V.P.H.
2036 DHV =	5,560 V.P.H.
D =	51% NB/49% SB
K =	10.9%
T =	3%
V =	60 M.P.H.

**HURRICANE EVACUATION ROUTE**  
This project includes work on a designated Hurricane Evacuation and Diversionary Route as follows:  
- Sakonnet River Bridge (RI Route 24 / 138) within the project limits  
Refer to Bridge General Notes Note 13.

### ADDENDUM No. 2



RI CONTRACT NO. 2016-CB-064  
F.A. PROJECT NO. BRO-0250 (011)  
PROJECT BEGINS @ CENTERLINE OF BEARING WEST ABUTMENT STA. 182+66.50

LAYOUT PLAN  
1" = 400'

R.I. STANDARD SPECIFICATIONS AND STANDARD DETAILS.  
SPECIFICATIONS TO GOVERN THIS PROJECT ARE THE R.I. STANDARD SPECIFICATIONS FOR ROAD AND BRIDGE CONSTRUCTION, AMENDED AUGUST 2013, WITH ALL REVISIONS AND THE STATE AND FEDERAL SPECIAL PROVISIONS INCLUDED IN THE CONTRACT DOCUMENTS. STANDARD DETAILS FOR THIS PROJECT ARE R.I. STANDARD DETAILS, 1998 EDITION, WITH ALL REVISIONS.

Kambiz Karbassi  
REGISTERED PROFESSIONAL ENGINEER  
7/20/16

R.I. DEPARTMENT OF TRANSPORTATION

APPROVED: *John Travema* 9-20-16  
DEPUTY CHIEF ENGINEER DATE

APPROVED: *Daniel W. Furb* 9-20-16  
CHIEF ENGINEER DATE

APPROVED: *[Signature]* 9/25/16  
DIRECTOR DATE

DEPARTMENT OF TRANSPORTATION  
FEDERAL HIGHWAY ADMINISTRATION

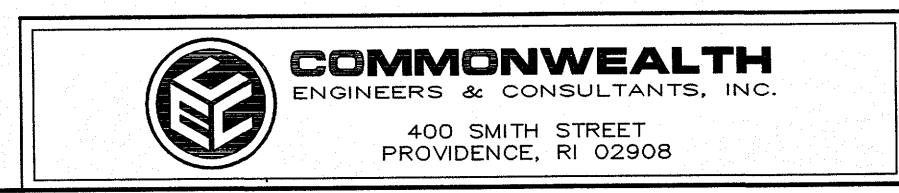
APPROVED: \_\_\_\_\_  
DIVISION ADMINISTRATOR DATE

Contract Number 2016-CB-064

Number of Sheet 1

Total Sheets 30

BASE OF LEVELS  
NGVD 1929 - VERTICAL  
NAD 1983 - HORIZONTAL



ALL REFERENCES IN THESE GENERAL NOTE SHEETS AND THROUGHOUT THE CONTRACT DRAWINGS TO THE RHODE ISLAND STANDARD SPECIFICATIONS FOR ROAD AND BRIDGE CONSTRUCTION SHALL EXCLUDE THE METHOD OF MEASUREMENT SECTION AND THE BASIS OF PAYMENT SECTION FOR ITEMS PAID FOR UNDER VARIOUS LUMP SUM ITEMS UNDER THIS CONTRACT.

**GENERAL NOTES**

- ALL CONSTRUCTION INDICATED ON THESE PLANS SHALL BE IN ACCORDANCE WITH:
  - THE 2013 REVISION OF AND SUPPLEMENTS TO THE RHODE ISLAND DEPARTMENT OF TRANSPORTATION STANDARD SPECIFICATIONS FOR ROAD AND BRIDGE CONSTRUCTION (RI STANDARD SPECIFICATIONS).
  - THE AMERICAN ASSOCIATION OF STATE HIGHWAY AND TRANSPORTATION OFFICIALS (AASHTO) LRFD BRIDGE CONSTRUCTION SPECIFICATIONS, 3rd EDITION DATED 2010, INCLUDING THE LATEST INTERIM REVISIONS TO DATE.
  - THE SPECIFICATIONS ACCOMPANYING THESE PLANS.
- DIMENSIONS, STATIONS, AND ELEVATIONS ARE SHOWN TO THE NEAREST ONE-HUNDREDTH OF A FOOT OR ONE-EIGHTH OF AN INCH, EXCEPT STRUCTURAL STEEL DIMENSIONS WHICH ARE TO THE NEAREST ONE-SIXTEENTH OF AN INCH.
- THE PLANS CONTAINED IN THIS SET WERE GRAPHICALLY PRODUCED FROM PREVIOUS CONSTRUCTION AND SAFETY IMPROVEMENTS PLANS. THE GEOMETRIC INFORMATION, BASELINES, AND ELEVATIONS SHOWN ARE BASED ON THE ORIGINAL DESIGN AND MAY NOT REFLECT THE ACTUAL FIELD CONDITIONS. THE CONTRACTOR SHALL BE RESPONSIBLE TO VERIFY EXISTING CONDITIONS PRIOR TO CONSTRUCTION. THE CONTRACTOR SHALL IMMEDIATELY NOTIFY THE ENGINEER OF ANY DISCREPANCIES IN THE PLANS AND SHALL RECEIVE DIRECTION PRIOR TO PROCEEDING WITH OR CONTINUING THE AFFECTED WORK.
- ANGLES ARE SHOWN TO THE NEAREST SECOND.
- ALL ELEVATIONS ARE REFERENCED TO THE NATIONAL GEODETIC VERTICAL DATUM OF 1929 (NGVD 29)
- COORDINATES USED ON THESE PLANS ARE BASED ON THE STATEWIDE COORDINATE SYSTEM, THE NORTH AMERICAN DATUM OF 1983 (NAD83).
- ALL WORKING POINTS ARE SHOWN AT THE CENTERLINES OF BEARINGS OF ABUTMENTS AND AT THE CENTERLINES OF PIERS, UNLESS OTHERWISE NOTED.
- ALL ABUTMENTS AND WALLS ARE DRAWN LOOKING AT THE EXPOSED FACES.
- ANY DAMAGE TO EXISTING PROPERTY RESULTING FROM THE CONTRACTOR'S OPERATION SHALL BE REPAIRED/REPLACED BY THE CONTRACTOR AT NO ADDITIONAL COST TO THE STATE.
- ALL ITEMS NOT REFERENCED FOR REMOVAL OR MODIFICATION WILL BE "EXISTING TO REMAIN" UNLESS OTHERWISE DIRECTED BY THE ENGINEER. THE CONTRACTOR SHALL TAKE SPECIAL CARE NOT TO DAMAGE PORTIONS OF THE EXISTING STRUCTURE TO REMAIN. IF DAMAGE OCCURS TO PORTIONS OF THE EXISTING STRUCTURE DESIGNATED TO REMAIN, BY THE CONTRACTOR'S OPERATIONS, THE CONTRACTOR WILL BE REQUIRED TO REPAIR OR REPLACE THE DAMAGED PORTIONS, AS DETERMINED BY THE ENGINEER AT THE CONTRACTOR'S EXPENSE.
- THE EXISTING UTILITIES SHOWN ON THE PLANS ARE APPROXIMATE AND WERE LOCATED USING THE BEST AVAILABLE INFORMATION. NO BUILDING SERVICE CONNECTIONS (ELECTRIC, TELEPHONE, GAS, WATER, SANITARY AND OTHERS) ARE SHOWN. THE CONTRACTOR SHALL ASSUME THAT SERVICES TO ALL BUILDINGS ARE PRESENT.
- BOTH FEDERAL AND STATE LAW (RI. GENERAL LAW 39-1.2) REQUIRE NOTIFICATION OF APPROPRIATE UTILITY COMPANIES BEFORE DIGGING, TRENCHING, BLASTING, DEMOLISHING, BORING, BACK FILLING, GRADING, LANDSCAPING, OR OTHER EARTH MOVING OPERATIONS. IT IS THE CONTRACTOR'S RESPONSIBILITY TO NOTIFY ALL UTILITY COMPANIES (INCLUDING THROUGH THE "DIG SAFE" PROGRAM) TO ENSURE THAT ALL UTILITIES, BOTH UNDERGROUND AND OVERHEAD, HAVE BEEN MARKED BEFORE COMMENCEMENT OF SUCH WORK. THE CONTRACTOR SHOULD UNDERSTAND THAT NOT ALL UTILITIES SUBSCRIBE TO THE "DIG SAFE" PROGRAM. ANY DAMAGE TO EXISTING UTILITIES MARKED IN THE FIELD, OR AS A RESULT OF FAILING TO CONTACT THE APPROPRIATE UTILITY COMPANIES, SHALL BE REPAIRED OR REPLACED (AS DEEMED APPROPRIATE BY THE STATE AND/OR THE IMPACTED UTILITY COMPANY) AT NO ADDITIONAL COST TO THE STATE.
- THIS PROJECT IS ON A HURRICANE EVACUATION AND DIVERSIONARY ROUTE. THE CONTRACTOR IS ADVISED THAT UPON 12 (TWELVE) HOURS NOTICE THE ROADWAYS SHALL BE OPEN TO EVACUEES AND EMERGENCY PERSONNEL. ANY EXTRA WORK NECESSARY TO COMPLY WITH THIS REQUIREMENT WILL BE REIMBURSED UNDER FORCE ACCOUNT PROCEDURES.

**DESIGN DATA**

DESIGN SPECIFICATIONS

- THE AASHTO LRFD BRIDGE DESIGN SPECIFICATIONS, SEVENTH EDITION DATED 2014, INCLUDING ALL INTERIM REVISIONS TO DATE.
- THE RHODE ISLAND LRFD BRIDGE DESIGN MANUAL DATED 2007.
- ALL OTHER APPLICABLE DESIGN SPECIFICATIONS ARE REFERENCED IN SECTION 1 OF THE RHODE ISLAND LRFD BRIDGE DESIGN MANUAL DATED 2007.
- THE 2013 REVISION OF AND SUPPLEMENTS TO THE RHODE ISLAND DEPARTMENT OF TRANSPORTATION STANDARD SPECIFICATIONS FOR ROAD AND BRIDGE CONSTRUCTION (RI STANDARD SPECIFICATIONS).
- IN CASE OF CONFLICT, THE RHODE ISLAND LRFD BRIDGE DESIGN MANUAL SHALL GOVERN.

**CONSTRUCTION AND PRIVATE PROPERTY ACCESS**

- THE CONTRACTOR SHALL NOTE THE LIMITED ACCESSIBILITY AVAILABLE TO CONDUCT THE VARIOUS WORK ITEMS PROPOSED.
- ALL WORK SHALL BE CONDUCTED WITHIN THE LIMITS OF DISTURBANCE SHOWN ON THESE PLANS.
- FOR PRIVATE PROPERTY ACCESS REQUIREMENTS, REFER TO THE CONTRACT PLANS AND SPECIFICATIONS.

**UTILITIES**

- LOCATION OF EXISTING UTILITIES SHOWN ARE APPROXIMATE. THE CONTRACTOR SHALL VERIFY LOCATIONS OF ALL UTILITIES, IN ALL AREAS OF CONSTRUCTION OPERATIONS. THE "DIG SAFE" POLICY SHALL ALSO BE FOLLOWED. ANY DAMAGE TO EXISTING UTILITIES SHOWN ON THE PLANS OR LOCATED BY DIG SAFE SHALL BE THE CONTRACTOR'S RESPONSIBILITY. THE COSTS TO REPAIR ANY DAMAGE TO THESE UTILITIES SHALL BE BORNE SOLELY BY THE CONTRACTOR.
- THE CONTRACTOR IS ADVISED OF THE PRESENCE OF ELECTRICAL SERVICE CONDUIT IN THE MEDIAN, THE UPPER SECTION OF THE "THROUGH-TRUSS" PORTION OF THE MAIN SPAN, AND ON BENTS 15 & 16. THE CONTRACTOR SHALL COORDINATE OPERATIONS WITH THE APPROPRIATE UTILITY COMPANIES TO CONFIRM THAT THESE LINES HAVE BEEN DEACTIVATED.
- NAVIGATIONAL LIGHTING MUST REMAIN IN SERVICE AT ALL TIMES.
- OVERHEAD WIRES EXIST IN THE VICINITY OF THE STRUCTURE ALONG BOTH ENDS OF THE BRIDGE. PRIOR TO THE COMMENCING OF ANY OF HIS OPERATIONS, THE CONTRACTOR SHALL CONFIRM THE LOCATIONS OF THESE WIRES AND MAINTAIN AWARENESS OF THEM THROUGH THE DURATION OF HIS WORK.
- FIBER-OPTIC / TELEVISION CABLE ALSO EXISTS AT VARIOUS LOCATIONS ON THE STRUCTURE, INCLUDING, BUT NOT LIMITED TO BENT 15 / 16, BENT 5, AND ALONG THE SOUTH FASCIA. THE CONTRACTOR SHALL BE RESPONSIBLE TO CONFIRM THAT THESE LINES HAVE BEEN DEACTIVATED.

**GENERAL NOTES REGARDING TEMPORARY CONSTRUCTION CONDITIONS:**

- DESIGN WIND PRESSURES FOR CONSTRUCTION:

WIND PRESSURES TO BE USED BY THE CONTRACTOR DESIGN DURING THE CONSTRUCTION CONTRACT (WITH THE EXCEPTION OF SIGNS) SHALL BE FROM THE FOLLOWING TABLE :

HEIGHT ABOVE GROUND (FEET)	WIND PRESSURE (PSF)
UP TO 17'	33
OVER 17' AND UP TO 33'	37
OVER 33' AND UP TO 50'	41
OVER 50' AND UP TO 75'	44
OVER 75' AND UP TO 100'	47

TABLE NOTES:

- APPLICATION OF THE TABULAR PRESSURES:
  - BRIDGE COMPONENTS DURING DEMOLITION, NOT INCLUDING CRANE LIFTING.
  - FALSEWORK, SHORING, AND SCAFFOLDING AS DEFINED IN FHWA "GUIDE DESIGN SPECIFICATION FOR BRIDGE TEMPORARY WORKS", EXCLUDING 3-DIMENSIONAL LATTICED OR TRUSSED FRAMES OR TOWERS,
  - TEMPORARY SHIELDING
- WIND PRESSURES FOR ALL OTHER STRUCTURES SHALL BE CALCULATED BASED ON ASCE "DESIGN LOADS ON STRUCTURES DURING CONSTRUCTION", SEI/ASCE 37-02. THE EXPOSURE CATEGORY SHALL BE C. FOR STRUCTURES SITUATED ABOVE LIVE INTERSTATE TRAFFIC, THE ABOVE VALUES SHALL BE INCREASED BY 5 PSF.

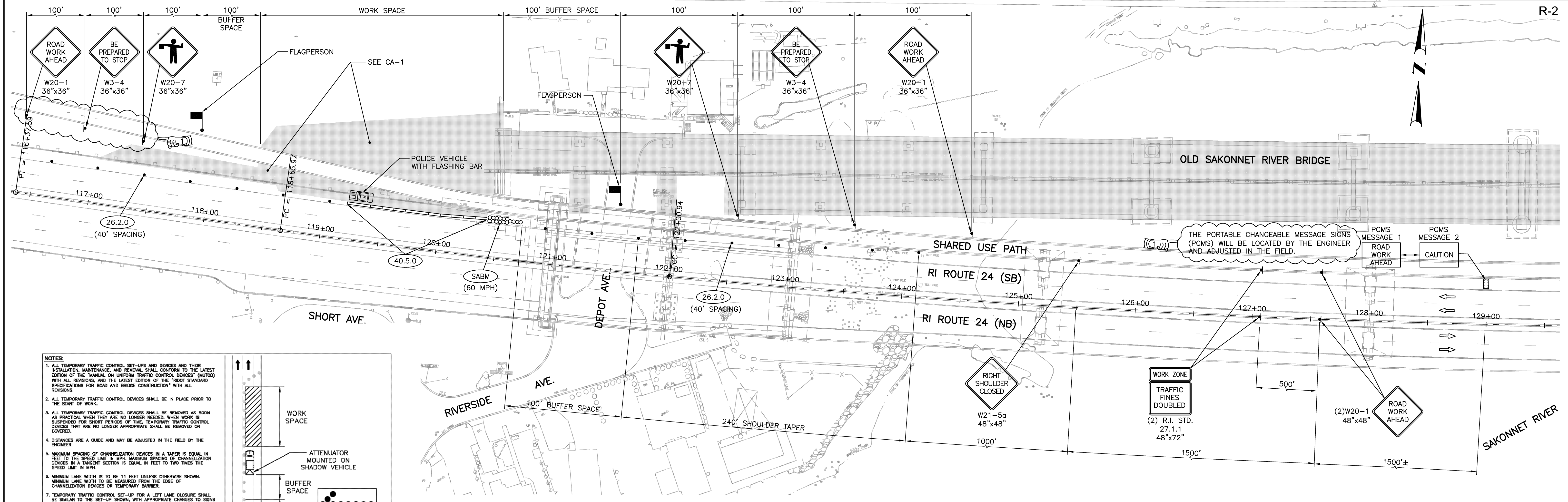
**BRIDGE DEMOLITION NOTES:**

- THE REMOVAL OF THE SPECIFIED PORTIONS OF EXISTING SAKONNET RIVER BRIDGE SHALL BE PERFORMED BY MECHANICAL METHODS ONLY. THE USE OF EXPLOSIVES IS NOT ALLOWED ON THIS PROJECT.
- THE SAKONNET RIVER IS A NAVIGABLE WATERWAY.
- THE CONTRACTOR SHALL SUBMIT A CONCEPTUAL DEMOLITION PLAN AND A FINAL DEMOLITION PLAN IN ACCORDANCE WITH ITEM CODE 803.9901 "REMOVE AND DISPOSE PORTIONS OF OLD SAKONNET BRIDGE". THE DEMOLITION PROCEDURE IS SUBJECT TO REVIEW AND APPROVAL BY CRMC, RIDEM, USCG, AND ACOE. NO BRIDGE DEMOLITION ACTIVITIES WILL BE AUTHORIZED TO BEGIN PRIOR TO APPROVAL FROM ALL FOUR AGENCIES, AS REQUIRED. THE CONTRACTOR WILL NOT BE ALLOWED TO PROCEED WITHOUT A RIDOT APPROVED DEMOLITION PROCEDURE.
- A REGISTERED PROFESSIONAL ENGINEER, LICENSED IN THE STATE OF RHODE ISLAND, WILL BE REQUIRED TO STAMP THE CONTRACTOR'S DEMOLITION SHOP DRAWING PLANS AND PROCEDURES.
- ANY CHANGES TO THE APPROVED DEMOLITION PLANS MUST BE STAMPED BY THE CONTRACTOR'S PROFESSIONAL ENGINEER, LICENSED IN THE STATE OF RHODE ISLAND, AND SUBMITTED TO RIDOT FOR REVIEW. ALL CHANGES ARE SUBJECT TO REVIEW AND APPROVAL BY CRMC, RIDEM, USCG, AND ACOE PRIOR TO RIDOT AUTHORIZATION.
- A MANDATORY PRE-CONSTRUCTION MEETING WILL BE HELD A MINIMUM OF TWO WEEKS PRIOR TO THE START OF DEMOLITION TO DISCUSS THE FINAL DEMOLITION PLAN, WORK SCHEDULES, CONTINGENCY PLANS, SAFETY REQUIREMENTS AND TRAFFIC (VEHICULAR AND BOAT) CONTROL. THE CONTRACTOR'S PROFESSIONAL ENGINEER AND APPLICABLE SUBCONTRACTORS WILL BE REQUIRED TO ATTEND THIS MEETING, AS WILL THE RIDOT RESIDENT ENGINEER, THE RIDOT PROJECT MANAGER, AND THE DESIGN CONSULTANT.
- NO DEMOLITION DEBRIS OR EQUIPMENT WILL BE ALLOWED TO ENTER THE WATER AT ANY TIME. THE CONTRACTOR SHALL, AT HIS COST, REMOVE ANY DEBRIS OR EQUIPMENT THAT ACCIDENTALLY ENTERS THE WATER.
- NO DEMOLITION DEBRIS WILL BE ALLOWED TO BE STOCKPILED WITHIN THE PROJECT LIMITS OR WITHIN 200' OF ANY SHORELINE FEATURE, AS DEFINED IN THE RHODE ISLAND COASTAL RESOURCES MANAGEMENT PROGRAM (RICRMP). ALL OFF-SITE STOCKPILES MUST BE IN ACCORDANCE WITH RIDOT STANDARD DRAINAGE AND EROSION CONTROL NOTES IN SHEET 3 OF THESE PLANS. DEBRIS SHALL BE LOADED DIRECTLY ONTO WAITING TRUCKS OR BARGES AND REMOVED FROM THE SITE REGULARLY FOR DISPOSAL AND/OR RECYCLING.
- THE CONTRACTOR WILL NOT BE PERMITTED TO FURTHER BREAK UP THE REMOVED CONCRETE DECK PIECES BEYOND THAT NECESSARY FOR TRANSPORT OR TO SEPARATE THE REINFORCING STEEL FROM THE CONCRETE WITHIN THE PROJECT AREA - THE BRIDGE DECK DEBRIS SHALL BE LOADED DIRECTLY ONTO WAITING TRUCKS OR BARGES AND REMOVED FROM THE SITE REGULARLY FOR DISPOSAL AND/OR RECYCLING.
- THE CONTRACTOR SHALL PERFORM A POST-DEMOLITION SUBAQUEOUS INSPECTION OF THE NAVIGABLE CHANNEL AFTER ANY DEMOLITION ACTIVITIES THAT REQUIRE THE CLOSURE OF THE CHANNEL. THE SUBAQUEOUS INSPECTION SHALL BE PERFORMED PRIOR TO THE RE-OPENING OF THE CHANNEL AND SUBMITTED TO THE ENGINEER FOR THE U.S. COAST GUARD REVIEW AND APPROVAL. THE NAVIGABLE CHANNEL WILL NOT BE PERMITTED TO RE-OPEN WITHOUT U.S. COAST GUARD APPROVAL.

CEC# 03062.00

ADDENDUM No. 2

 <p>400 SMITH STREET PROVIDENCE, RI 02908</p>	 <p>RHODE ISLAND DEPARTMENT OF TRANSPORTATION</p>	<table border="1"> <thead> <tr> <th colspan="3">REVISIONS</th> <th colspan="3">REVISIONS</th> </tr> <tr> <th>NO.</th> <th>DATE</th> <th>BY</th> <th>NO.</th> <th>DATE</th> <th>BY</th> </tr> </thead> <tbody> <tr> <td>1</td> <td>12-7-16</td> <td>JRO</td> <td></td> <td></td> <td></td> </tr> </tbody> </table>	REVISIONS			REVISIONS			NO.	DATE	BY	NO.	DATE	BY	1	12-7-16	JRO				<p align="center"><b>BRIDGE DEMOLITION OLD SAKONNET RIVER BRIDGE NO. 250</b></p> <p align="center">PORTSMOUTH / TIVERTON      RHODE ISLAND</p>	
		REVISIONS			REVISIONS																	
NO.	DATE	BY	NO.	DATE	BY																	
1	12-7-16	JRO																				
<p>DESIGNED BY:      DATE:</p> <p>CHECKED BY:      DATE:</p> <p>SCALE: NONE</p>	<p align="center"><b>BRIDGE GENERAL NOTES - 1</b></p>	<p align="center">SHEET DESIGNATION <b>G-6</b></p>																				



### ROUTE 24 SOUTHBOUND SHOULDER CLOSURE

SCALE: 1"=40'

**NOTES:**

1. ALL TEMPORARY TRAFFIC CONTROL SET-UPS AND DEVICES AND THEIR INSTALLATION, MAINTENANCE, AND REMOVAL SHALL CONFORM TO THE LATEST EDITION OF THE "MANUAL ON UNIFORM TRAFFIC CONTROL DEVICES" (MUTCD) WITH ALL REVISIONS, AND THE LATEST EDITION OF THE "BEST STANDARD SPECIFICATIONS FOR ROAD AND BRIDGE CONSTRUCTION" WITH ALL REVISIONS.
2. ALL TEMPORARY TRAFFIC CONTROL DEVICES SHALL BE IN PLACE PRIOR TO THE START OF WORK.
3. ALL TEMPORARY TRAFFIC CONTROL DEVICES SHALL BE REMOVED AS SOON AS PRACTICAL WHEN THEY ARE NO LONGER NEEDED. WHEN WORK IS SUSPENDED FOR SHORT PERIODS OF TIME, TEMPORARY TRAFFIC CONTROL DEVICES THAT ARE NO LONGER APPROPRIATE SHALL BE REMOVED OR COVERED.
4. DISTANCES ARE A GUIDE AND MAY BE ADJUSTED IN THE FIELD BY THE ENGINEER.
5. MAXIMUM SPACING OF CHANNELIZATION DEVICES IN A TAPER IS EQUAL IN FEET TO THE SPEED LIMIT IN MPH. MAXIMUM SPACING OF CHANNELIZATION DEVICES IN A TARGET SECTION IS EQUAL IN FEET TO TWO TIMES THE SPEED LIMIT IN MPH.
6. MINIMUM LANE WIDTH IS TO BE 11 FEET UNLESS OTHERWISE SHOWN. MINIMUM LANE WIDTH TO BE MEASURED FROM THE EDGE OF CHANNELIZATION DEVICES OR TEMPORARY BARRIER.
7. TEMPORARY TRAFFIC CONTROL SET-UP FOR A LEFT LANE CLOSURE SHALL BE SIMILAR TO THE SET-UP SHOWN, WITH APPROPRIATE CHANGES TO SIGNS AND OTHER DEVICES TO INDICATE THE LEFT LANE CLOSURE.
8. THE SIZES OF ALL DIAMOND SHAPED ADVANCE WARNING SIGNS SHALL BE 48" x 48".
9. THE DISTANCE BETWEEN THE SHADOW VEHICLE AND THE WORK SPACE SHOULD BE SELECTED BASED ON TRAFFIC AND SITE CONDITIONS AS WELL AS THE CHARACTERISTICS OF THE SHADOW VEHICLE/ATTENUATOR AND ITS MANUFACTURER'S RECOMMENDATIONS, BUT SHOULD BE NO GREATER THAN THE MINIMUM DISTANCE SUFFICIENT TO ENSURE THAT THE SHADOW VEHICLE WILL NOT ROLL INTO THE WORK SPACE WHEN HIT BY AN ERRANT VEHICLE.
10. WHERE A SIDE STREET OR RAMP INTERSECTS THE WORK ZONE, ADDITIONAL TEMPORARY TRAFFIC CONTROL DEVICES SHALL BE INSTALLED IN ACCORDANCE WITH PART 8 OF THE MUTCD.

**TAPER AND BUFFER LENGTHS**

Speed Limit	Taper Length* (L) Feet	Buffer Space** (B) Feet
40 MPH	320	180
45 MPH	540	220
50 MPH	600	280
55 MPH	660	340
60 MPH	720	420
65 MPH	780	480

\* Required  
\*\* Suggested

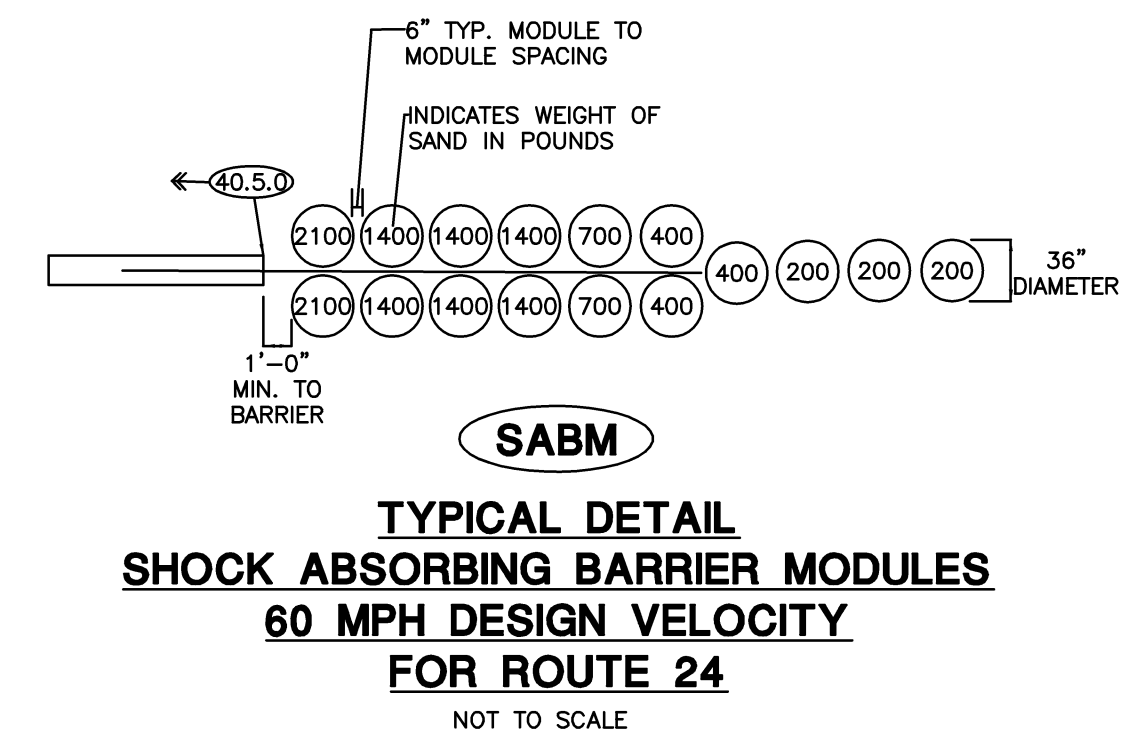
(SEE STD. FOR SIZES AND INSTALL LOCATION)

**TYPICAL LANE CLOSURE ON FREEWAY OR EXPRESSWAY**

NOT TO SCALE DATE: 12-23-08

### LEGEND

- ▲ RIDOT APPROVED TEMPORARY SIGN SUPPORT
- ▲ ADVANCE WARNING ARROW PANEL
- ▲ FLUORESCENT TRAFFIC CONES R.I. STD. 26.1.0
- POLYETHYLENE DRUM BARRICADE WITH MARKINGS STD. 26.2.0
- PLASTIC PIPE BARRICADE STD. 26.3.0
- ☐ POLICE VEHICLE WITH FLASHING BAR
- ☐ PORTABLE CHANGEABLE MESSAGE SIGN
- DIRECTION OF TRAFFIC FLOW
- ☐ FLAGPERSON
- ▭ WORK SPACE



### MAINTENANCE AND PROTECTION OF TRAFFIC NOTES:

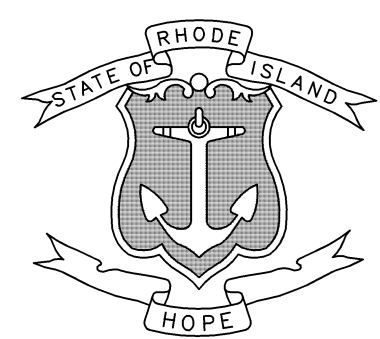
1. ALL TRAFFIC CONTROL DEVICES AND TEMPORARY TRAFFIC CONTROL ZONE ACTIVITIES SHALL MEET THE REQUIREMENTS OF THE MANUAL ON UNIFORM TRAFFIC CONTROL DEVICES (MUTCD) 2009 EDITION AND ALL REVISIONS.
2. TEMPORARY GUIDE SIGNS, DIRECTIONAL SIGNS, AND ROUTE SIGNS USED IN TEMPORARY TRAFFIC CONTROL ZONES SHALL HAVE A BLACK LEGEND AND BORDER ON AN ORANGE BACKGROUND.
3. TEMPORARY CONSTRUCTION SIGNS AND BARRICADES SHALL BE IN PLACE PRIOR TO THE START OF WORK.
4. ALL SIGNS AND BARRICADES ARE TO BE PLACED AND RELOCATED AS SHOWN ON THE PLANS OR AS DIRECTED BY THE ENGINEER.
5. CONES SHALL ONLY BE USED WHEN A TRAFFIC CONTROL SET-UP IS USED DURING WORKING HOURS AND IT IS SUBSEQUENTLY BROKEN DOWN AT THE END OF THE WORK DAY.
6. SIGN MOUNTINGS SHALL BE IN ACCORDANCE WITH THE R.I. SPECIFICATIONS FOR TEMPORARY CONSTRUCTION SIGNS.
7. TEMPORARY CONSTRUCTION SIGNS SHALL BE REMOVED OR COVERED WHEN WORK IS NOT TAKING PLACE.
8. NOTE DELETED
9. POLICE DUTY OFFICERS AND FLAGPERSONS SHALL BE ACTIVELY ENGAGED IN DIRECTING TRAFFIC, PEDESTRIANS AND COORDINATION OF CONSTRUCTION EQUIPMENT ACCESS AT ALL TIMES.
10. THE CONTRACTOR SHALL NOTIFY AND COORDINATE ALL ROADWAY CLOSURES WITH RIDOT, RIPTA AND APPLICABLE AUTHORITIES LISTED IN THE TRAFFIC MANAGEMENT PLAN (TMP) & GENERAL PROVISIONS A MINIMUM OF 7 CALENDAR DAYS PRIOR TO ANY ROADWAY CLOSURE.

ADDENDUM No. 2

CLC# 05062.00

**COMMONWEALTH ENGINEERS & CONSULTANTS, INC.**

400 SMITH STREET  
PROVIDENCE, RI 02908



## RHODE ISLAND DEPARTMENT OF TRANSPORTATION

REVISIONS			REVISIONS		
NO.	DATE	BY	NO.	DATE	BY
1	10-18-16	NS			
2	12-8-16	NS			

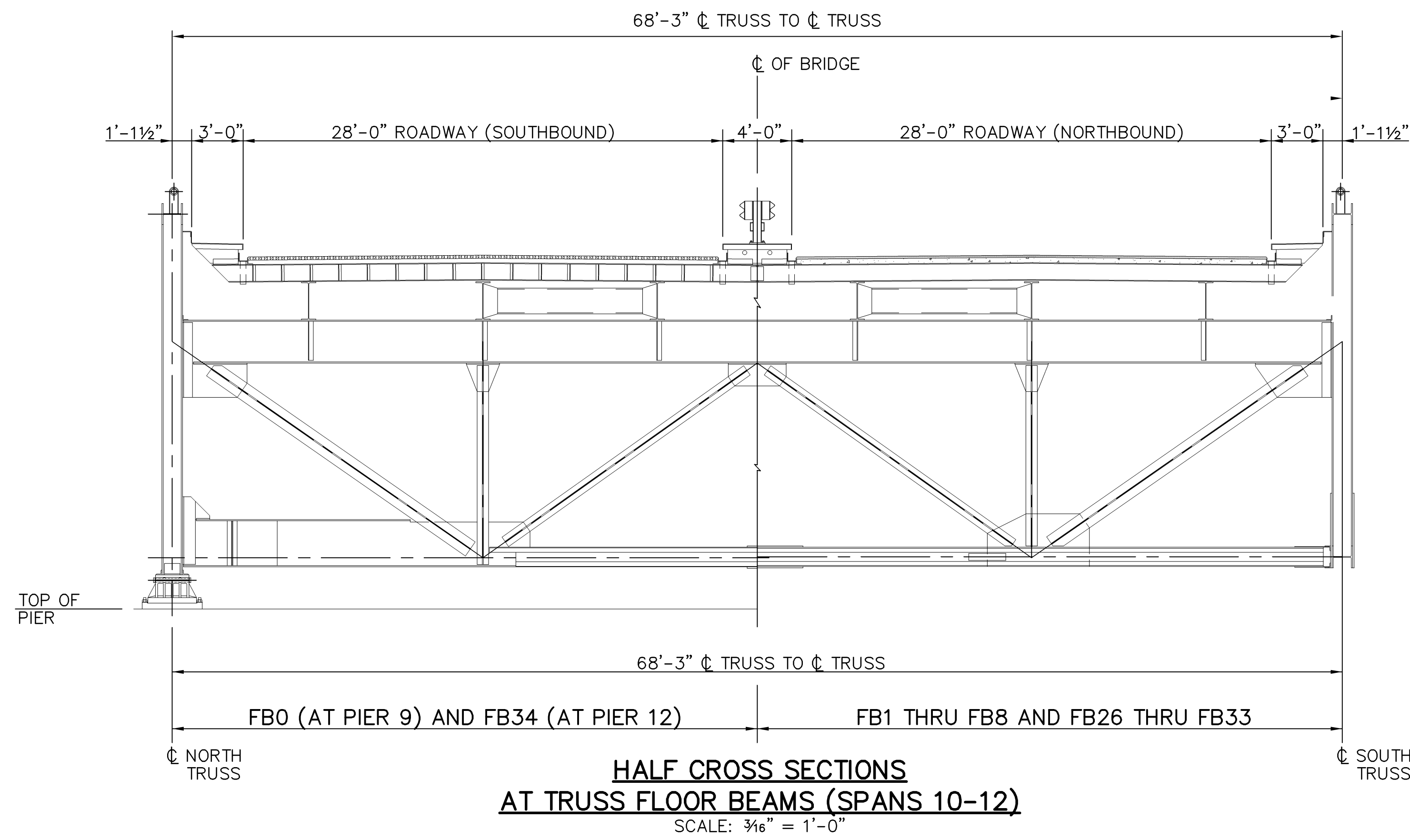
DESIGNED BY: DATE: \_\_\_\_\_  
 CHECKED BY: DATE: \_\_\_\_\_  
 SCALE: 1"=40'

**BRIDGE DEMOLITION OLD SAKONNET RIVER BRIDGE NO. 250**

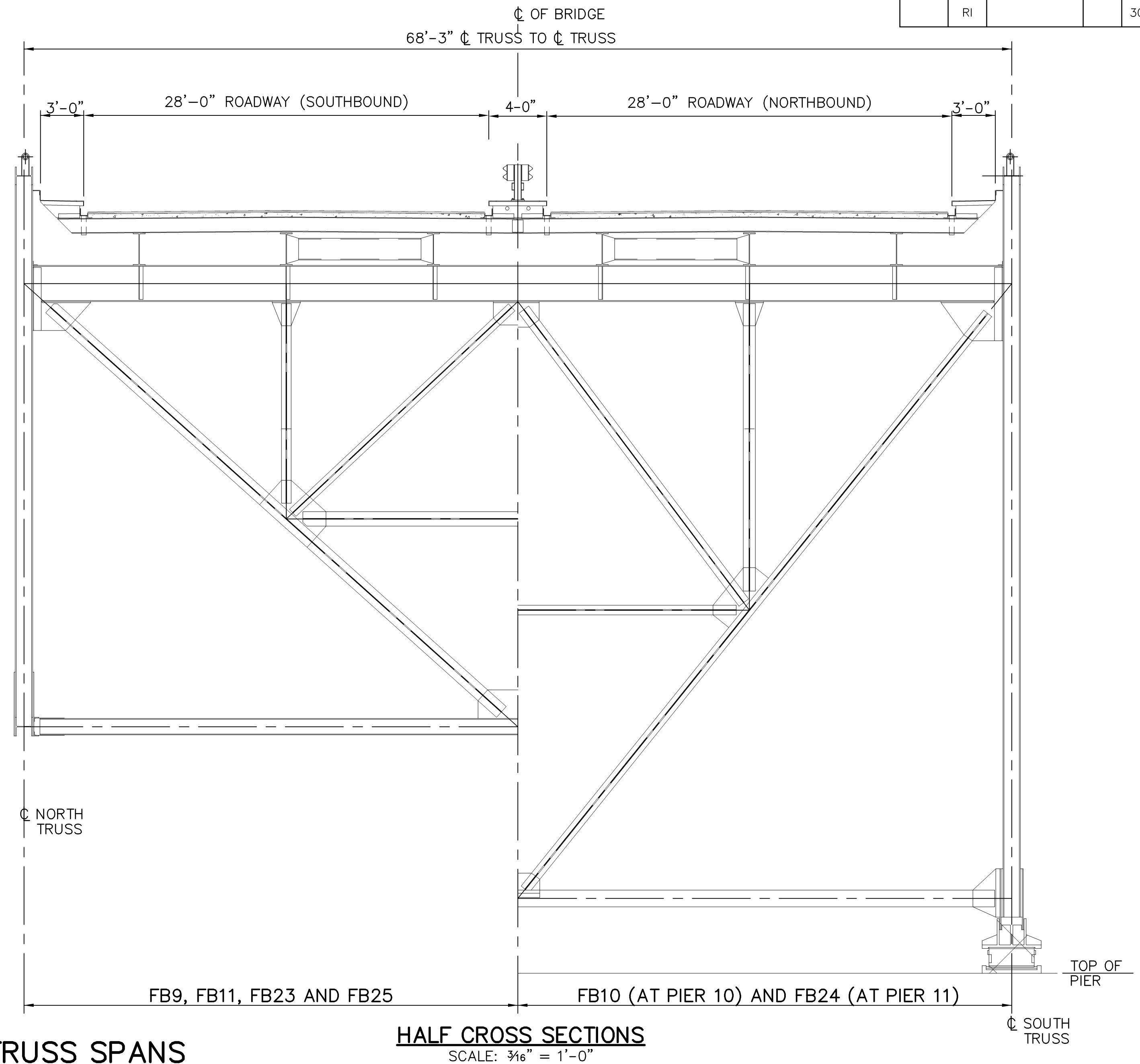
PORTSMOUTH / TIVERTON RHODE ISLAND

**MAINTENANCE AND PROTECTION OF TRAFFIC PLAN NO. 1**

SHEET DESIGNATION: MPT-1



**HALF CROSS SECTIONS  
AT TRUSS FLOOR BEAMS (SPANS 10-12)**  
SCALE: 3/16" = 1'-0"

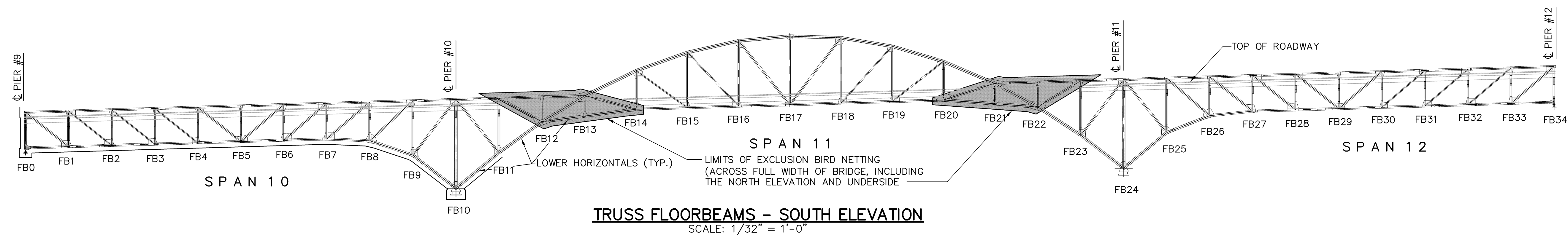


**HALF CROSS SECTIONS**  
SCALE: 3/16" = 1'-0"

**TYPICAL SECTIONS AT TRUSS SPANS**

**NOTE:**  
DETAILS SHOWN ARE FOR ILLUSTRATIVE PURPOSES ONLY. THE CONTRACTOR IS RESPONSIBLE FOR FIELD VERIFYING THE AREA TO BE ENCLOSED BY NETTING TO ENSURE FULL CLOSURE.

**LEGEND**  
[Shaded Area] DENOTES AREAS OF EXCLUSION BIRD NETTING

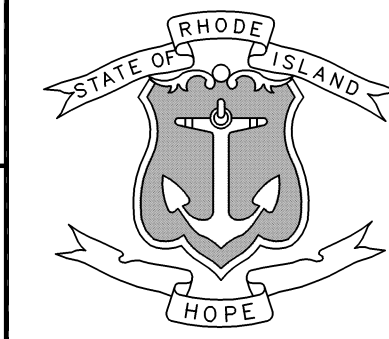


**TRUSS FLOORBEAMS - SOUTH ELEVATION**  
SCALE: 1/32" = 1'-0"

ADDENDUM No. 2

CEC# 03062.00

**COMMONWEALTH**  
ENGINEERS & CONSULTANTS, INC.  
400 SMITH STREET  
PROVIDENCE, RI 02908



**RHODE ISLAND**  
DEPARTMENT OF TRANSPORTATION

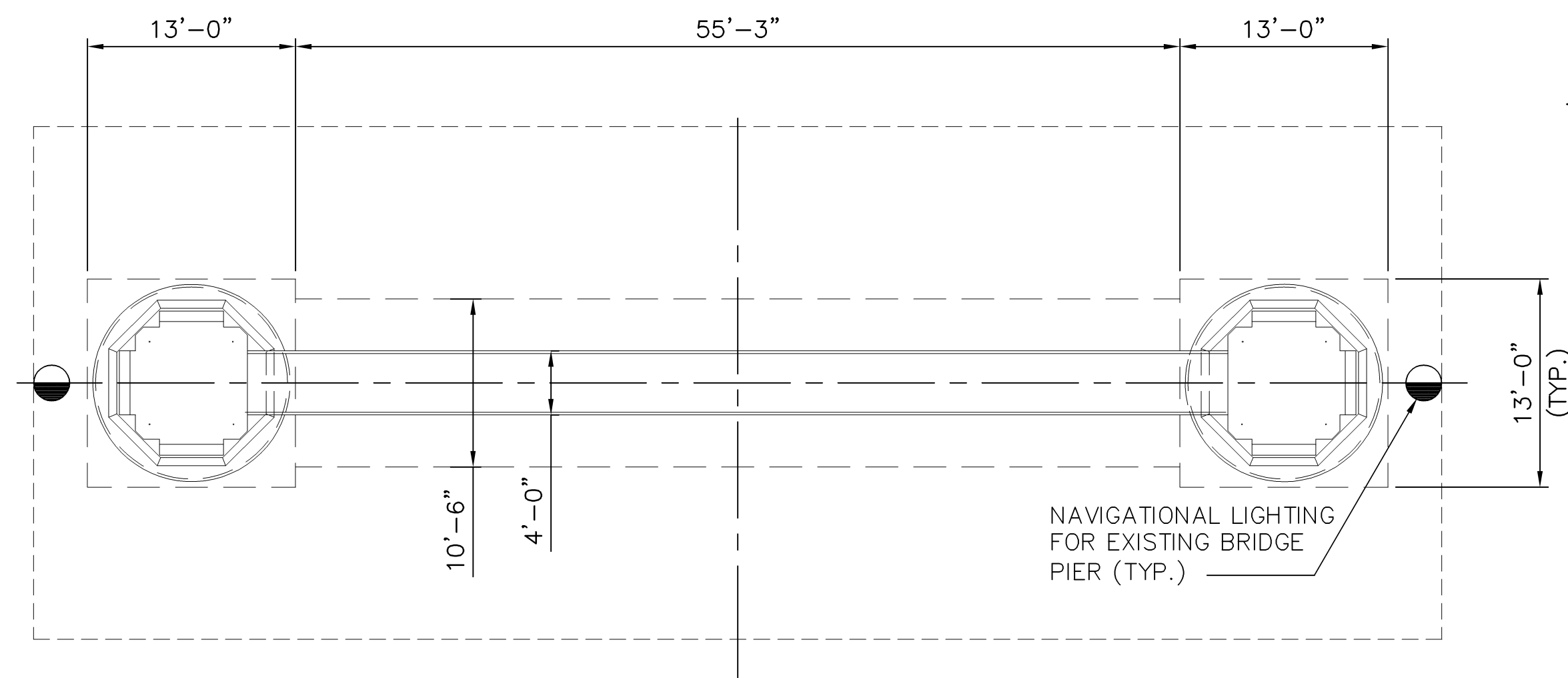
REVISIONS			REVISIONS		
NO.	DATE	BY	NO.	DATE	BY
2	12-7-16	JRO			

DESIGNED BY: DATE: \_\_\_\_\_  
 CHECKED BY: DATE: \_\_\_\_\_  
 SCALE: AS SHOWN

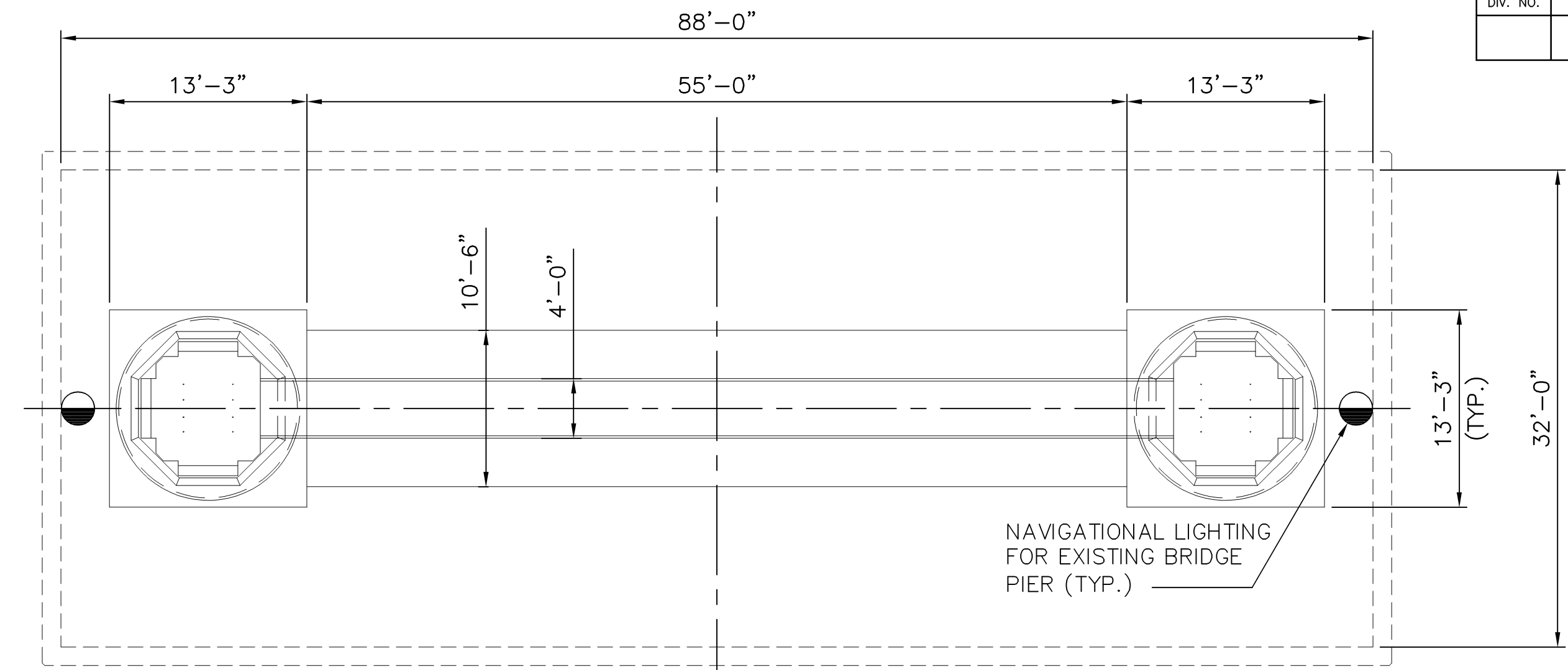
**BRIDGE DEMOLITION**  
**OLD SAKONNET RIVER BRIDGE NO. 250**  
PORTSMOUTH / TIVERTON  
RHODE ISLAND

**EXCLUSION BIRD NETTING**

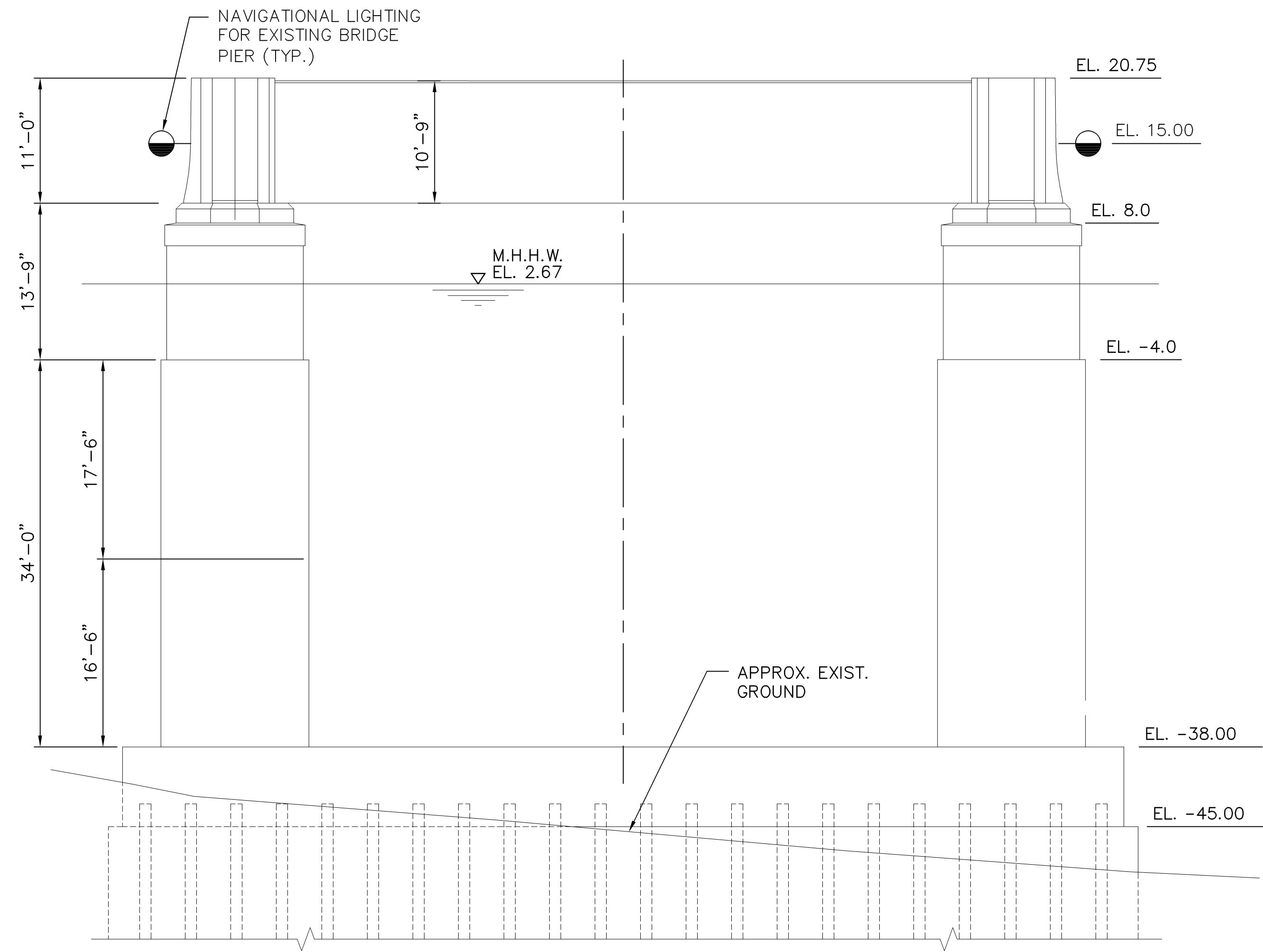
SHEET DESIGNATION



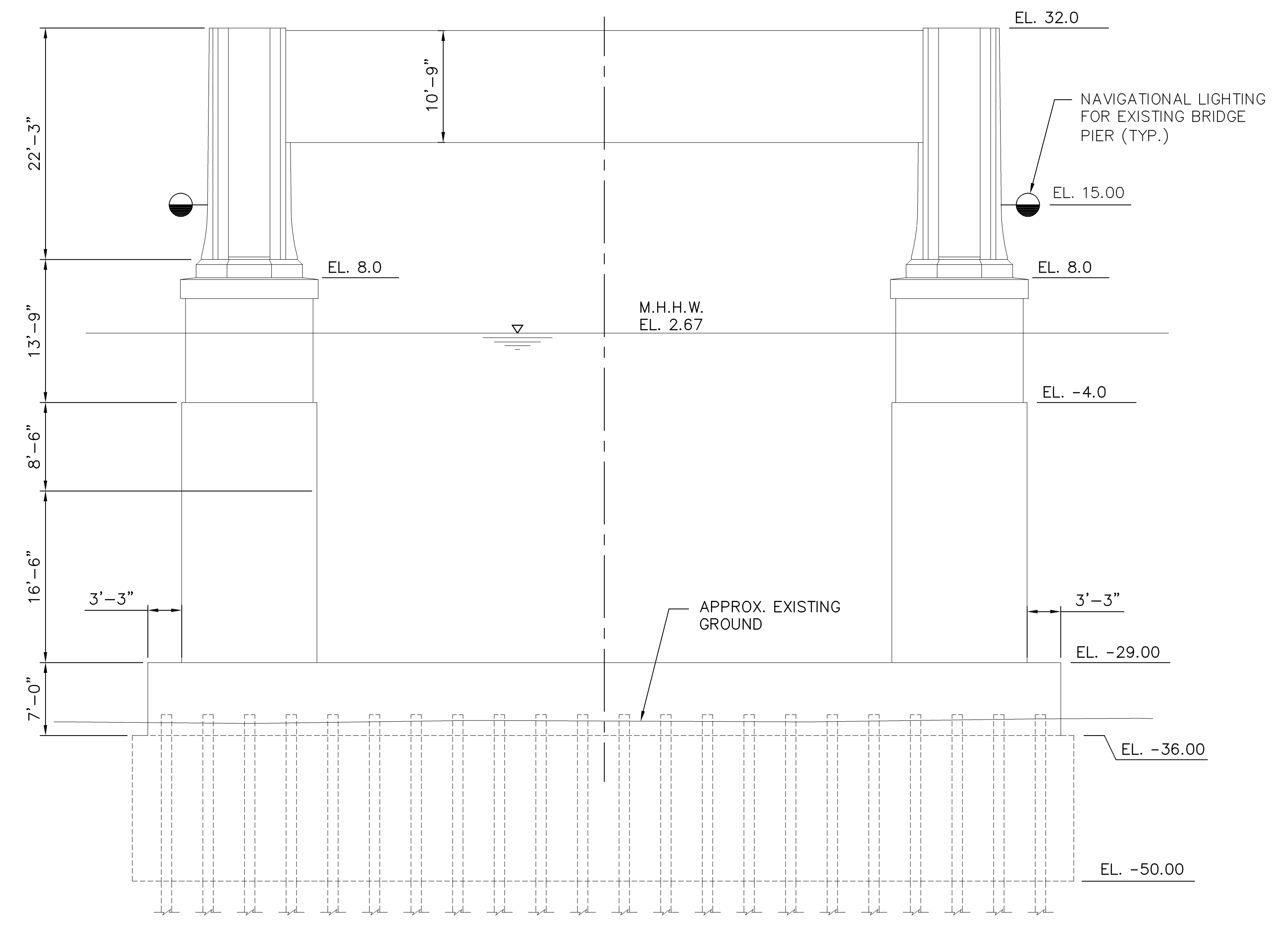
**PLAN AT PIER 10**  
SCALE: 1/8"=1'-0"



**PLAN AT PIER 11**  
SCALE: 1/8"=1'-0"



**WEST ELEVATION**  
SCALE: 1/8"=1'-0"



**WEST ELEVATION**  
SCALE: 1/8"=1'-0"

ADDENDUM No. 2

CEC# 03062.00

**COMMONWEALTH**  
ENGINEERS & CONSULTANTS, INC.  
400 SMITH STREET  
PROVIDENCE, RI 02908



**RHODE ISLAND**  
DEPARTMENT OF TRANSPORTATION

REVISIONS			REVISIONS		
NO.	DATE	BY	NO.	DATE	BY
2	12-7-16	JRO			

DESIGNED BY: DATE: \_\_\_\_\_  
CHECKED BY: DATE: \_\_\_\_\_  
SCALE: AS SHOWN

**BRIDGE DEMOLITION**  
**OLD SAKONNET RIVER BRIDGE NO. 250**  
PORTSMOUTH / TIVERTON  
RHODE ISLAND

NAVIGATIONAL LIGHTING FOR  
EXISTING BRIDGE PIERS No. 10 & No. 11

SHEET DESIGNATION

## Table of Contents - Distribution of Quantities

Project Name - 0031N OLD SAKONNET RIVER BRIDGE DEMOLITION  
 Estimate Name - SRB Demolition - Superstructure & Bent Removal - Addendum 2  
 R.I. Contract No. - 2016-CB-064  
 FAP Nos: BRO-0250(011)

ItemCode	Description	Page
201.0409	REMOVE AND DISPOSE FLEXIBLE PAVEMENT	1
201.0415	REMOVE AND DISPOSE GUARDRAIL AND POST ALL TYPES	1
201.0419	REMOVE AND DISPOSE FENCE	1
201.0450	REMOVE AND STOCKPILE ON SITE GRANITE CURB	1
201.9902	REMOVE, STOCKPILE AND REINSTALL EXISTING SHARED USE PATH LIGHT POLE AND LUMINAIRE SYSTEM	1
201.9905	REMOVE AND SALVAGE ELECTRICAL EQUIPMENT	1
201.9906	REMOVE AND RESET BOULDERS	2
204.0100	TRIMMING AND FINE GRADING	2
206.0312	COMPOST FILTER SOCK 12 INCH DIAMETER	2
209.9901	SEDEMENTATION CONTROL FOR CATCH BASINS	3
212.2000	CLEANING AND MAINTENANCE OF EROSION CONTROLS	3
213.0100	PLACEMENT OF MILLINGS BENEATH GUARDRAIL	3
302.0100	GRAVEL BORROW SUBBASE COURSE	3
401.2000	CLASS 12.5 HMA	4
403.0300	ASPHALT EMULSION TACK COAT	4
601.0300	CLASS A PORTLAND CEMENT CONCRETE	4
803.9901	REMOVE AND DISPOSE PORTIONS OF OLD SAKONNET RIVER BRIDGE	4
901.0101	GUARDRAIL STEEL BEAM SINGLE FACE EARTH AND ASPHALT	5
903.0206	CHAIN LINK FENCE 6' STD 31.2.0	5
903.0410	TEMPORARY CHAIN LINK FENCE	5
906.0720	RESET STOCKPILE CURB STRAIGHT CIRCULAR CORNER RETURNS	5
907.0100	WATER FOR DUST CONTROL	5
914.5010	FLAGPERSONS	5
914.5020	FLAGPERSONS - OVERTIME	6
916.0600	SHOCK ABSORBING BARRIER MODULES	6
920.0025	PLACED STONE RIPRAP R-3, R-4, R-5 STANDARD 8.3.0	6
920.0150	BEDDING FOR RIPRAP FS-2 STANDARD 8.3.0	6
920.0200	FILTER FABRIC FOR RIP-RAP	6
922.0100	TEMPORARY CONSTRUCTION SIGNS STANDARD 29.1.0 AND 27.1.1	6
923.0105	DRUM BARRICADE STANDARD 26.2.0	8
923.0120	PLASTIC PIPE BARRICADE STANDARD 26.3.0	8
923.0200	FLUORESCENT TRAFFIC CONES STANDARD 26.1.0	8
924.0113	ADVANCE WARNING ARROW PANEL	9
925.0112	PORTABLE CHANGEABLE MESSAGE SIGN	9
926.0121	UNANCHORED PRECAST CONCRETE BARRIER FOR TEMPORARY TRAFFIC CONTROL STANDARD 40.5.0	9
926.9901	BUOYS FOR MARINE WORK ZONE DELINEATION	9
926.9903	NAVIGATION LIGHTING FOR EXISTING BRIDGE PIERS	9
928.9901	TRUCK MOUNTED ATTENUATOR WITH TRUCK MOUNTED FLASHING ARROW BOARD	10
929.0110	FIELD OFFICE	10
931.0110	CLEANING AND SWEEPING PAVEMENT	10
932.0200	FULL-DEPTH SAWCUT OF BITUMINOUS PAVEMENT	10
934.9901	PHOTOGRAPHS AND VIDEO OF DEMOLITION OPERATIONS	10
934.9902	PRE-DEMOLITION HYDROGRAPHIC SURVEY	11
934.9903	POST-DEMOLITION HYDROGRAPHIC SURVEY	11
934.9904	POST-DEMOLITION SUBAQUEOUS INSPECTION	11
<b>936.0110</b>	<b>** ITEM DELETED **</b>	<b>11</b>
937.0200	MAINTENANCE AND MOVEMENT TRAFFIC PROTECTION	11
943.0200	TRAINEE MAN-HOURS	11
950.9901	WATER TRANSPORTATION FOR THE ENGINEER	11
L01.0104	PLANTABLE SOIL 4 INCHES DEEP	12
L02.0101	GENERAL HIGHWAY SEEDING (TYPE 1)	12
L05.9902	SEMI-PERMANENT EROSION CONTROL BLANKET	12
L11.0103	SHRUB PLANT PROTECTION DEVICE STANDARD 51.2.0	12

**Table of Contents - Distribution of Quantities**

Project Name - 0031N OLD SAKONNET RIVER BRIDGE DEMOLITION  
Estimate Name - SRB Demolition - Superstructure & Bent Removal - Addendum 2  
R.I. Contract No. - 2016-CB-064  
FAP Nos: BRO-0250(011)

<b>ItemCode</b>	<b>Description</b>	<b>Page</b>
800.9901	FURNISH AND INSTALL EXCLUSION BIRD NETTING	13
800.9902	FURNISH AND STOCKPILE EXCLUSION BIRD NETTING	13
936.9901	MOBILIZATION	13
944.9901	DIESEL EMISSIONS REDUCTION PROGRAM	13

### Distribution of Quantities

Project Name - 0031N OLD SAKONNET RIVER BRIDGE DEMOLITION  
 Estimate Name - SRB Demolition - Superstructure & Bent Removal - Addendum 2  
 R.I. Contract No. - 2016-CB-064  
 FAP Nos: BRO-0250(011)

Item No.	Item Code	Description	UM	Qty.	Pay Code	Seq. No.
S043	934.9902	PRE-DEMOLITION HYDROGRAPHIC SURVEY	LS			
		BRIDGE				
		BRIDGE		1.00	0040	01
<b>Item 934.9902 Total:</b>				<b>1.00</b>		
S044	934.9903	POST-DEMOLITION HYDROGRAPHIC SURVEY	LS			
		BRIDGE				
		BRIDGE		1.00	0040	01
<b>Item 934.9903 Total:</b>				<b>1.00</b>		
S045	934.9904	POST-DEMOLITION SUBAQUEOUS	LS			
		INSPECTION				
		BRIDGE				
		BRIDGE		1.00	0040	01
<b>Item 934.9904 Total:</b>				<b>1.00</b>		
046	936.0110	MOBILIZATION	LS			
		PROJECTWIDE				
		AS REQUIRED			0040	01
<b>Item 936.0110 Total:</b>					<b>**DELETED**</b>	
047	937.0200	MAINTENANCE AND MOVEMENT TRAFFIC	LS			
		PROTECTION				
		PROJECTWIDE				
		AS DIRECTED		1.00	0040	01
<b>Item 937.0200 Total:</b>				<b>1.00</b>		
048	943.0200	TRAINEE MAN-HOURS	MHRS			
		PROJECTWIDE				
		AS DIRECTED		5,000.00	0040	01
<b>Item 943.0200 Total:</b>				<b>5,000.00</b>		
049	950.9901	WATER TRANSPORTATION FOR THE	LS			

**Distribution of Quantities**

Project Name - 0031N OLD SAKONNET RIVER BRIDGE DEMOLITION  
 Estimate Name - SRB Demolition - Superstructure & Bent Removal - Addendum 2  
 R.I. Contract No. - 2016-CB-064  
 FAP Nos: BRO-0250(011)

<u>Item No.</u>	<u>Item Code</u>	<u>Description</u>	<u>UM</u>	<u>Qty.</u>	<u>Pay Code</u>	<u>Seq. No.</u>
053	L11.0103	Cont.				
		Item L11.0103 Total:		437.00		
054	800.9901	FURNISH AND INSTALL EXCLUSION BIRD NETTING	SF			
		BRIDGE				
		BRIDGE		18,000.00	0040	01
		Item 800.9901 Total:		18,000.00		
055	800.9902	FURNISH AND STOCKPILE EXCLUSION BIRD NETTING	SF			
		BRIDGE				
		BRIDGE		12,500.00	0040	01
		Item 800.9902 Total:		12,500.00		
056	936.9901	MOBILIZATION	LS			
		PROJECTWIDE				
		AS REQUIRED		1.00	0040	01
		Item 936.9901 Total:		1.00		
057	944.9901	DIESEL EMISSIONS REDUCTION PROGRAM	EACH			
		PROJECTWIDE				
		PROJECTWIDE		205,000.00	0040	01
		Item 944.9901 Total:		205,000.00		