

This feature contains Concrete Walkways. There are Ramps/Walkways 5 feet wide and approximately 825 feet total length.

| Total Area: 4,125 square feet.



Gateway Apartments | Building 2 East Stairway Entrance

FIGURE 2

This feature contains Concrete Stairs w/ Landings. There are 2 stairs at 4 feet wide. There are landings having 16 square feet.

| Total Area: 24 square feet.



Gateway Apartments | Building 2 West Stairway Entrance

FIGURE 3

This feature contains Concrete Stairs w/ Landings. There is 1 stair at 4 feet wide. There are landings having 16 square feet.



This feature contains Concrete Stairs. There are 7 stairs at 5 feet wide.

| Total Area: 35 square feet.



This feature contains Concrete Stairs. There are 2 stairs at 4 feet wide.

| Total Area: 8 square feet.



This feature contains Concrete Stairs. There are 2 stairs at 5 feet wide.

| Total Area: 10 square feet.



This feature contains Concrete Stairs. There are 7 stairs at 5 feet wide.

| Total Area: 35 square feet.



This feature contains Concrete Stairs w/ Landings. There is 1 stair at 4 feet wide. There are landings having 16 square feet. | Total Area: 20 square feet.



This feature contains Concrete Stairs w/ Landings. There are 3 stairs at 4 feet wide. There are landings having 16 square feet.

| Total Area: 28 square feet.



This feature contains Concrete Stairs. There are 3 stairs at 4 feet wide.

| Total Area: 12 square feet.



This feature contains Concrete Stairs. There are 6 stairs at 4 feet wide.

| Total Area: 24 square feet.



This feature contains Concrete Stairs w/ Landings. There is 1 stair at 4 feet wide. There are landings having 16 square feet. | Total Area: 20 square feet.



This feature contains a Concrete Ramp. There are Ramps/Walkways 5 feet wide and approximately 30 feet total length. | Total Area: 150 square feet.



This feature contains Concrete Stairs w/ Landings. There are 6 stairs at 5 feet wide. There are landings having 66 square feet.

| Total Area: 96 square feet.



Gateway Apartments | Laundry Building Ramp

FIGURE 15

This feature contains a Concrete Ramp. There are Ramps/Walkways 4 feet wide and approximately 30 feet total length. | Total Area: 120 square feet.



This feature contains Concrete Walkways. There are Ramps/Walkways 6 feet wide and approximately 2,859 feet total length.

| Total Area: 17,154 square feet.



This feature contains Concrete Stairs. There are 7 stairs at 5 feet wide.

| Total Area: 35 square feet.



This feature contains Concrete Stairs w/ Landings. There are 2 stairs at 10 feet wide. There are landings having 50 square feet.

| Total Area: 70 square feet.



This feature contains Concrete Stairs w/ Landings. There are 4 stairs at 5 feet wide. There are landings having 25 square feet.

| Total Area: 45 square feet.



This feature contains Concrete Stairs. There is 1 stair at 6 feet wide.

| Total Area: 6 square feet.



Graduate Village Apartments | Building 2 East Stairs

FIGURE 21

This feature contains Concrete Stairs w/ Landings. There are 9 stairs at 5 feet wide. There are landings having 25 square feet.

| Total Area: 70 square feet.



This feature contains Concrete Stairs w/ Landings. There are 2 stairs at 10 feet wide. There are landings having 50 square feet.

| Total Area: 70 square feet.



This feature contains Concrete Stairs w/ Landings. There is 1 stair at 10 feet wide. There are landings | Total Area: 60 square feet. having 50 square feet.



This feature contains Concrete Stairs w/ Landings. There are 14 stairs at 5 feet wide. There are landings having 25 square feet.

| Total Area: 95 square feet.



This feature contains Concrete Stairs w/ Landings. There are 8 stairs at 5 feet wide. There are landings having 25 square feet.

| Total Area: 65 square feet.



This feature contains Concrete Stairs w/ Landings. There are 2 stairs at 10 feet wide. There are landings having 50 square feet.

| Total Area: 70 square feet.



This feature contains Concrete Stairs w/ Landings. There are 9 stairs at 5 feet wide. There are landings having 25 square feet.

| Total Area: 70 square feet.



This feature contains Concrete Stairs w/ Landings. There are 8 stairs at 5 feet wide. There are landings having 25 square feet.

| Total Area: 65 square feet.



This feature contains Concrete Stairs. There are 5 stairs at 5 feet wide.

| Total Area: 25 square feet.



This feature contains Concrete Stairs. There are 6 stairs at 5 feet wide.

| Total Area: 30 square feet.



This feature contains Concrete Stairs w/ Landings. There are 6 stairs at 5 feet wide. There are landings having 25 square feet.

| Total Area: 55 square feet.



This feature contains Concrete Stairs w/ Landings. There are 10 stairs at 5 feet wide. There are landings having 25 square feet.

| Total Area: 75 square feet.



This feature contains Concrete Stairs w/ Landings. There is 1 stair at 10 feet wide. There are landings | Total Area: 60 square feet. having 50 square feet.



This feature contains Concrete Stairs w/ Landings. There are 5 stairs at 9 feet wide. There are landings having 45 square feet.

| Total Area: 90 square feet.



This feature contains Concrete Stairs w/ Landings. There is 1 stair at 10 feet wide. There are landings | Total Area: 60 square feet. having 50 square feet.



This feature contains Concrete Stairs w/ Landings. There are 6 stairs at 5 feet wide. There are landings having 25 square feet.

| Total Area: 55 square feet.



This feature contains Concrete Stairs w/ Landings. There are 12 stairs at 5 feet wide. There are landings having 25 square feet.

| Total Area: 85 square feet.



This feature contains Concrete Stairs w/ Landings. There are 4 stairs at 9 feet wide. There are landings having 135 square feet.

| Total Area: 171 square feet.



This feature contains Concrete Walkways. There are Ramps/Walkways 6 feet wide and approximately 170 feet total length.

| Total Area: 1,020 square feet.



This feature contains Concrete Stairs. There are 6 stairs at 6 feet wide.

| Total Area: 36 square feet.

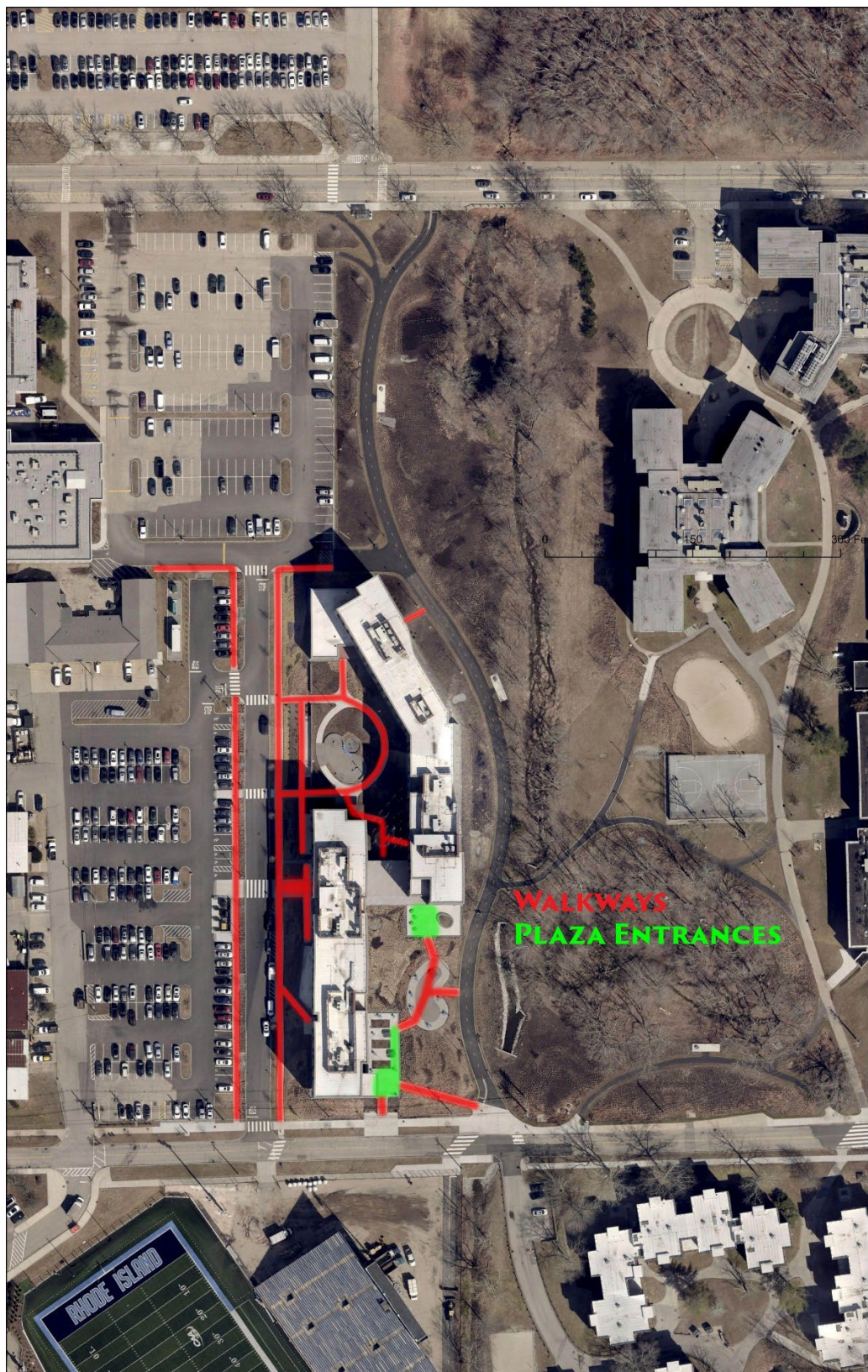


Brookside Residence Hall | All Walkways | Plaza Entrances

FIGURE 41

This feature contains Concrete Walkways. There are Ramps/Walkways 6 feet wide and approximately 3,000 feet total length.

Total Plaza Area: 1,800 square feet
Total Walkways: 3,000 feet



This feature contains Concrete Stairs. There are 9 stairs at 10 feet wide. There are landings having 120 square feet. | Total Area: 210 square feet.



This feature contains a Concrete Plaza.

| Total Area: 200 square feet.

