

November 8, 2017

STATE OF RHODE ISLAND AND PROVIDENCE PLANTATION  
DEPARTMENT OF ADMINISTRATION

DIVISION OF PURCHASES BID NO. 7566495

RHODE ISLAND DEPARTMENT OF TRANSPORTATION

RHODE ISLAND CONTRACT NO.2017-CB-059

FEDERAL-AID PROJECT NO. FAP Nos: BRO-0354(004)

**Railroad Avenue Bridge No. 354 (58B)**

Chapel Street (Route 107) to 115' East of Clear River

CITY/TOWN OF Burrillville

COUNTY OF PROVIDENCE

NOTICE TO PROSPECTIVE BIDDERS

ADDENDUM NO. 1 Prospective bidders and all concerned are hereby notified of the following changes in the Plans, Specifications, Proposal and Distribution of Quantities for this contract. These changes shall be incorporated in the Plans, Specifications, Proposal and Distribution of Quantities, and shall become an integral part of the Contract Documents.

**A. Specification Change/Addition**

1. JS Index

Delete Page JS-ii in its entirety and replace it with revised Page JS-ii (R-1) attached to this Addendum No. 1. Special Provision 936.9901 has been added.

2. JS-102

Delete Page JS-102 in its entirety and replace it with revised Page JS-102 (R-1) attached to this Addendum No. 1. Special Provision Code 938.1000, Price Adjustments have been updated.

3. JS-115

Add Page JS-115 attached to this Addendum No. 1. A specification for Item Code 936.9901, Mobilization has been added.

**B. Distribution of Quantities**

1. Index Pages

Delete Index Pages 1 thru 3 in their entirety and replace with revised Page 1 (R-1) thru 3(R-1) attached to this Addendum No. 1. Items with changes are indicated in bold type.

2. Page 20

Delete Page 20 in its entirety and replace it with revised Page 20 (R-1) attached to this Addendum No. 1. Item 936.0100 has been deleted.

3. Page 23

Delete Page 23 in its entirety and replace it with revised Page 23 (R-1) attached to this Addendum No. 1. Item 936.9901 has been added.

**C. Proposal Addition/Deletion**

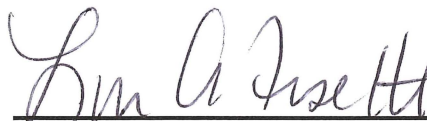
1. Proposal Pages

Item 936.0100 has been deleted and Item 936.9901 has been added.

**D. Miscellaneous**

1. Existing Sewer Plan

Existing Sewer Plan has been included as Appendix F as listed in the Contract Summary.



RI Department of Transportation

Administrator, Division of Project Management

**INDEX**  
**SPECIFICATIONS – JOB SPECIFIC**

<b><u>CODE</u></b>	<b><u>TITLE</u></b>	<b><u>PAGE</u></b>
906.9901	Precast Concrete Wheelchair Ramp Curb	JS-99
907.1000	Dust Control	JS-100
937.1000	Maintenance and Movement of Traffic Protection Devices	JS-101
938.1000	Price Adjustments	JS-102
943.0200	On-the-Job Training	JS-103
L.02.1000	Seeding	JS-108
T12.9901	Pole Mounted Construction Camera	JS-109
936.9901	Mobilization	JS-115

**CODE 938.1000**

**PRICE ADJUSTMENTS**

**DESCRIPTION:**

**a. Liquid Asphalt Cement.\*** The Base Price of Liquid Asphalt Cement as required to implement **Subsection 938.03.1** of the Standard Specifications is \$ 402.50 per ton.

\* In the case of modified asphalt binder, this price adjustment provision shall only apply to the neat liquid asphalt component. This provision shall not apply to the modifier component, manufacture, storage, transportation or other associated costs.

**b. Diesel Fuel.** The Base Price of Diesel Fuel as required to implement **Subsection 938.03.2** of the Standard Specifications is \$ 1.9955 per gallon.

The price adjustments listed above were listed on the RIDOT Website as being effective on October 16, 2017. Current price adjustments can be found at the following web address:

<http://www.dot.ri.gov/business/contractorsandconsultants.php>

## SECTION 936.9901

### MOBILIZATION

Remove **SECTION 936 MOBILIZATION AND DEMOBILIZATION**, PAGES AC-243 through AC-244 of the RI Standard Specifications for Road and Bridge Construction in its entirety and replace it with the following.

**936.01 DESCRIPTION.** This work shall consist of those efforts necessary for the movement of the Contractor's personnel and equipment to the project site and for the establishment of all the Contractor's field offices, buildings and other facilities required for the performance of the Contract.

**936.02 MATERIALS.** Not applicable.

**936.03 CONSTRUCTION METHODS.** Not applicable.

**936.04 METHOD OF MEASUREMENT.** This work shall be measured for payment as follows:

a. **First Payment.** The first payment of 50 percent of the lump sum bid price for Mobilization or 5 percent of the total contract amount without mobilization, whichever is the lesser, will be made on the first progress payment.

b. **Second Payment.** The second payment of 35 percent of the lump sum price for Mobilization or 3.5 percent of the total contract amount without mobilization, whichever is the lesser, will be made when the progress payment estimate of the amount earned, not including that amount earned for mobilization, is 5 percent of the total contract amount without mobilization.

c. **Third Payment.** The third payment of 15 percent of the lump sum price for Mobilization or 1.5 percent of the total contract amount without mobilization, whichever is the lesser, will be made when the progress payment estimate of the amount earned, not including that amount earned for mobilization, is 10 percent of the total contract amount without mobilization.

d. **Final Payment.** Upon completion of all the work on the project, including demobilization, payment of any amount bid for Mobilization in excess of the total amount previously paid, will be paid.

**936.05 BASIS OF PAYMENT.** "Mobilization" will be paid for at the contract lump sum price as listed in the Proposal. The price so-stated constitutes full and complete compensation for all labor, materials and equipment and other incidentals required to establish the Contractor's facilities at the site and, at the conclusion of the contract, for complete removal thereof.

No lump sum breakdown will be required for this item of work.

**Table of Contents - Distribution of Quantities**

Project Name - Railroad Avenue Bridge No. 354 (58B)

Estimate Name - Addendum No. 1

R.I. Contract No. - 2017-CB-059

FAP Nos: BRO-0354(004)

ItemCode	Description	Page
201.0321	CLEARING AND GRUBBING	1
201.0402	REMOVE AND DISPOSE CONCRETE CURB	1
201.0403	REMOVE AND DISPOSE SIDEWALKS	1
201.0409	REMOVE AND DISPOSE FLEXIBLE PAVEMENT	1
201.0412	REMOVE AND DISPOSE MANHOLE	1
201.0414	REMOVE AND DISPOSE PIPE - ALL SIZES	1
201.0415	REMOVE AND DISPOSE GUARDRAIL AND POST ALL TYPES	2
201.0419	REMOVE AND DISPOSE FENCE	2
201.0433	REMOVE AND DISPOSE BOLLARD	2
201.0610	REMOVE AND DISPOSE DIRECTIONAL, WARNING, REGULATORY, SERVICE, AND STREET SIGNS	2
202.0100	EARTH EXCAVATION	3
202.0700	COMMON BORROW	3
203.0100	STRUCTURAL EXCAVATION EARTH	3
203.0220	STRUCTURAL EXCAVATION ROCK MECHANICAL	3
203.0600	FILL GRAVEL BORROW UNDER STRUCTURES	3
203.0700	PERVIOUS FILL	4
203.9901	DEWATERING - PROJECT WIDE	4
204.0100	TRIMMING AND FINE GRADING	4
206.0301	COMPOST FILTER SOCK	4
208.0100	DEWATERING BASIN STANDARD 9.7.0	4
212.2000	CLEANING AND MAINTENANCE OF EROSION CONTROLS	5
213.0100	PLACEMENT OF MILLINGS BENEATH GUARDRAIL	5
302.0100	GRAVEL BORROW SUBBASE COURSE	5
303.0100	SPECIAL GRADED AGGREGATE FOR SHAPING AND TRIMMING DRIVEWAYS OR SHOULDERS	5
401.2000	CLASS 12.5 HMA	5
401.3100	MODIFIED CLASS 9.5 HMA	6
403.0300	ASPHALT EMULSION TACK COAT	6
601.0300	CLASS A PORTLAND CEMENT CONCRETE	6
603.1000	CONTROLLED LOW STRENGTH MATERIAL	6
701.0612	REINFORCED CONCRETE PIPE M 170 CLASS V 12 INCH	6
701.5306	6 INCH DUCTILE IRON WATER PIPE CLASS 52, PUSH-ON JOINT	7
701.7712	12 INCH REINFORCED CONCRETE PIPE END SECTION STANDARD 2.3.0	7
701.8106	6 INCH GATE VALVE AND BOX	7
701.9920	FURNISH AND INSTALL BRIDGE CROSSING WATER MAIN	7
701.9921	FURNISH AND INSTALL CORPORATION STOPS	7
702.0516	FRAME AND GRATE, HIGH CAPACITY, STANDARD 6.3.4	7
702.0522	FRAME AND COVER STANDARD 6.2.1	8
702.0533	PRECAST CONCRETE APRON STONE 38'' STANDARD 7.1.8	8
702.0605	PRECAST CATCH BASIN 4' DIAMETER STANDARD 4.4.0	8
702.0630	PRECAST MANHOLE 4' DIAMETER STANDARD 4.2.0	8
702.0713	PRECAST CONCRETE DROP INLET WITH APRON STONE STANDARD 4.5.1	8
702.9901	SEWER BYPASS	9
702.9910	24 INCH PVC SEWER PIPE	9
707.1000	ADJUST SANITARY MANHOLE	9
708.9040	CLEANING AND FLUSHING PIPE ALL SIZES	9
708.9041	CLEANING CATCH BASINS ALL TYPES AND SIZES	9
709.8103	FURNISH & INSTALL CEMENT CONCRETE CLASS B THRUST & ANCHOR BLOCKS CAST-IN-PLACE	9
711.0110	3'' PAVED WATERWAY CLASS I-1 STANDARD 8.4.0	10
713.8269	ADJUST WATER GATE BOXES TO GRADE	10

## Table of Contents - Distribution of Quantities

Project Name - Railroad Avenue Bridge No. 354 (58B)

Estimate Name - Addendum No. 1

R.I. Contract No. - 2017-CB-059

FAP Nos: BRO-0354(004)

ItemCode	Description	Page
800.9901	RAILROAD AVENUE BRIDGE NO. 354	10
800.9902	FURNISH AND DELIVER COMPOSITE ARCH BRIDGE COMPONENTS	10
803.0100	REMOVE AND DISPOSE EXISTING SUPERSTRUCTURE	10
803.9901	REMOVE AND DISPOSE PORTIONS OF MASONRY SUBSTRUCTURE	11
804.9901	MOBILIZATION AND DEMOBILIZATION OF MICROPILE EQUIPMENT	11
804.9902	DRILLED MICROPILES	11
804.9903	MICROPILE LOAD TEST	11
805.9901	EXCAVATION SUPPORT	11
807.9901	RECONSTRUCT STONE MASONRY	12
808.0321	CONCRETE SUBSTRUCTURE CLASS HP 3/4'' WALL CAP	12
808.0722	UNREINFORCED CONCRETE CLASS A 3/4'' SUB-FOOTINGS	12
817.2110	REPAIRS TO STRUCTURAL CONCRETE MASONRY (PATCHING MORTAR)	12
817.9901	GROUT BASE OF EXISTING FOOTINGS	12
901.0151	TERMINAL END SECTION SINGLE FACE STANDARD 34.3.2	13
901.0190	GUARDRAIL STEEL BEAM ANCHORAGE APPROACH SECTION STANDARDS 34.3.1 AND 34.3.3	13
901.0193	GUARDRAIL STEEL BEAM SINGLE FACE STANDARD 34.2.0	13
901.9901	STEEL BEAM BRIDGE CONNECTION APPROACH END (WITH NESTED RAIL)	14
901.9902	STEEL BEAM BRIDGE CONNECTION TRAILING END (WITHOUT NESTED RAIL)	14
901.9903	COLLAPSIBLE BOLLARD	14
901.9904	INSTALL WOOD BOLLARD	14
903.0250	SPLIT RAIL FENCE	14
903.0410	TEMPORARY CHAIN LINK FENCE	14
903.0411	TEMPORARY CHAIN LINK GATE	15
905.0110	PORTLAND CEMENT SIDEWALK MONOLITHIC STANDARD 43.1.0	15
905.0115	PORTLAND CEMENT CONCRETE DRIVEWAY STANDARD 43.5.0	15
906.0210	CEMENT CONCRETE CURB PRECAST STRAIGHT STANDARD 7.1.0	15
906.0211	CEMENT CONCRETE CURB PRECAST CIRCULAR STANDARD 7.1.0	15
906.0221	6' PRECAST CONCRETE TRANSITION CURB STANDARD 7.1.2	16
906.0261	PRECAST CONCRETE RAMP STONE 12-INCH CIRCULAR STANDARD 7.1.9	16
906.9901	PRECAST CONCRETE WHEELCHAIR RAMP CURB	16
907.0100	WATER FOR DUST CONTROL	16
914.5010	FLAGPERSONS	16
914.5020	FLAGPERSONS - OVERTIME	16
919.0101	TEST PITS	17
920.0040	DUMPED STONE RIPRAP R-3, R-4, R-5 STANDARD 8.3.0	17
920.0135	BEDDING FOR RIPRAP FS-2 STANDARD 8.3.0	17
920.0200	FILTER FABRIC FOR RIP-RAP	17
922.0100	TEMPORARY CONSTRUCTION SIGNS STANDARD 29.1.0 AND 27.1.1	18
923.0105	DRUM BARRICADE STANDARD 26.2.0	18
923.0120	PLASTIC PIPE BARRICADE STANDARD 26.3.0	18
923.0200	FLUORESCENT TRAFFIC CONES STANDARD 26.1.0	18
925.0112	PORTABLE CHANGEABLE MESSAGE SIGN	19
926.0121	UNANCHORED PRECAST CONCRETE BARRIER FOR TEMPORARY TRAFFIC CONTROL STANDARD 40.5.0	19
929.0110	FIELD OFFICE	19
931.0110	CLEANING AND SWEEPING PAVEMENT	19
932.0100	CUTTING AND MATCHING ASPHALT	19
932.0200	FULL-DEPTH SAWCUT OF BITUMINOUS PAVEMENT	20
<b>936.0100</b>	<b>** ITEM DELETED **</b>	<b>20</b>
937.0200	MAINTENANCE AND MOVEMENT TRAFFIC PROTECTION	20

**Table of Contents - Distribution of Quantities**

Project Name - Railroad Avenue Bridge No. 354 (58B)

Estimate Name - Addendum No. 1

R.I. Contract No. - 2017-CB-059

FAP Nos: BRO-0354(004)

<b>ItemCode</b>	<b>Description</b>	<b>Page</b>
942.0200	DETECTABLE WARNING PANEL STANDARD 48.1.0	20
943.0200	TRAINEE MAN-HOURS	20
L01.0102	LOAM BORROW 4 INCHES DEEP	20
L02.0102	RESIDENTIAL SEEDING (TYPE 2)	21
T12.9901	POLE MOUNTED CONSTRUCTION CAMERA	21
T15.0100	DIRECTIONAL REGULATORY AND WARNING SIGNS	21
T20.0006	6 INCH WHITE FAST - DRYING WATERBORNE PAVEMENT MARKING PAINT	21
T20.0012	12 INCH WHITE FAST - DRYING WATERBORNE PAVEMENT MARKING PAINT	21
T20.0104	4 INCH YELLOW FAST - DRYING WATERBORNE PAVEMENT MARKING PAINT	22
T20.1000	REMOVE EXISTING PAVEMENT MARKINGS	22
T20.1106	6 INCH TEMPORARY WATERBORNE PAINT PAVEMENT MARKINGS WHITE	22
T20.1112	12 INCH TEMPORARY WATERBORNE PAINT PAVEMENT MARKINGS WHITE	22
T20.1204	4 INCH TEMPORARY WATERBORNE PAINT PAVEMENT MARKINGS YELLOW	22
T20.2006	6 INCH EPOXY RESIN PAVEMENT MARKINGS WHITE	22
T20.2012	12 INCH EPOXY RESIN PAVEMENT MARKINGS WHITE	23
T20.2014	4 INCH EPOXY RESIN PAVEMENT MARKINGS YELLOW	23
<b>936.9901</b>	<b>MOBILIZATION</b>	<b>23</b>



### Distribution of Quantities

Project Name - Railroad Avenue Bridge No. 354 (58B)  
 Estimate Name - Addendum No. 1  
 R.I. Contract No. - 2017-CB-059  
 FAP Nos: BRO-0354(004)

Item No.	Item Code	Description	UM	Qty.	Pay Code	Seq. No.
096	932.0200	FULL-DEPTH SAWCUT OF BITUMINOUS PAVEMENT	LF			
		RAILROAD AVENUE				
		1+15		140.00	0011	01
		2+30		10.00	0011	01
<b>Item 932.0200 Total:</b>				<b>150.00</b>		
097	936.0100	MOBILIZATION AND DEMOBILIZATION	LS			
		RAILROAD AVENUE				
		PROJECT WIDE			0011	01
<b>Item 936.0100 Total:</b>				<b>**DELETED**</b>		
098	937.0200	MAINTENANCE AND MOVEMENT TRAFFIC PROTECTION	LS			
		PROJECT WIDE				
		AS DIRECTED BY THE ENGINEER		1.00	0011	01
<b>Item 937.0200 Total:</b>				<b>1.00</b>		
099	942.0200	DETECTABLE WARNING PANEL STANDARD	SF			
		48.1.0				
		RAILROAD AVENUE				
		1+25 LT/RT		20.00	0011	01
		2+20 RT		8.00	0011	01
<b>Item 942.0200 Total:</b>				<b>28.00</b>		
100	943.0200	TRAINEE MAN-HOURS	MHRS			
		PROJECT WIDE				
		AS DIRECTED BY THE ENGINEER		500.00	0011	01
<b>Item 943.0200 Total:</b>				<b>500.00</b>		
101	L01.0102	LOAM BORROW 4 INCHES DEEP	SY			
		RAILROAD AVENUE				
		1+15 - 3+15		360.00	0011	01

**Distribution of Quantities**

Project Name - Railroad Avenue Bridge No. 354 (58B)

Estimate Name - Addendum No. 1

R.I. Contract No. - 2017-CB-059

FAP Nos: BRO-0354(004)

Item No.	Item Code	Description	UM	Qty.	Pay Code	Seq. No.
112	T20.2006 Cont.	RAILROAD AVENUE				
		NORTH		200.00	0011	01
		SOUTH		200.00	0011	01
<b>Item T20.2006 Total:</b>				<b>400.00</b>		
113	T20.2012	12 INCH EPOXY RESIN PAVEMENT	LF			
		MARKINGS WHITE				
		RAILROAD AVENUE				
		BIKE PATH		8.00	0011	01
		STOP BAR		20.00	0011	01
<b>Item T20.2012 Total:</b>				<b>28.00</b>		
114	T20.2014	4 INCH EPOXY RESIN PAVEMENT	LF			
		MARKINGS YELLOW				
		RAILROAD AVENUE				
		BIKE PATH		30.00	0011	01
		CENTERLINE		400.00	0011	01
<b>Item T20.2014 Total:</b>				<b>430.00</b>		
115	936.9901	MOBILIZATION	LS			
		RAILROAD AVENUE				
		PROJECT WIDE		1.00	0011	01
<b>Item 936.9901 Total:</b>				<b>1.00</b>		

## Proposal Items

Project Name - Railroad Avenue Bridge No. 354 (58B)

Estimate Name - Addendum No. 1

R.I. Contract No. - 2017-CB-059

FAP Nos - BRO-0354(004)

-----  
 Note: The UNIT PRICE for each Item must be written in words and figures.  
 -----

No.	Item Code	Quantity	Description	Unit	Unit Bid Price \$0.00	Amount (PxQ) \$0.00
092	926.0121	60.00	UNANCHORED PRECAST CONCRETE BARRIER FOR TEMPORARY TRAFFIC CONTROL STANDARD 40.5.0			
	AT			LF		
093	929.0110	30.00	FIELD OFFICE			
	AT			PMO		
094	931.0110	6.00	CLEANING AND SWEEPING PAVEMENT			
	AT			HSY		
095	932.0100	30.00	CUTTING AND MATCHING ASPHALT			
	AT			LF		
096	932.0200	150.00	FULL-DEPTH SAWCUT OF BITUMINOUS PAVEMENT			
	AT			LF		
<b>097</b>	<b>936.0100</b>		<b>ItemDeleted</b>			
	AT			LS		
098	937.0200	1.00	MAINTENANCE AND MOVEMENT TRAFFIC PROTECTION			
	AT			LS		

### Proposal Items

Project Name - Railroad Avenue Bridge No. 354 (58B)

Estimate Name - Addendum No. 1

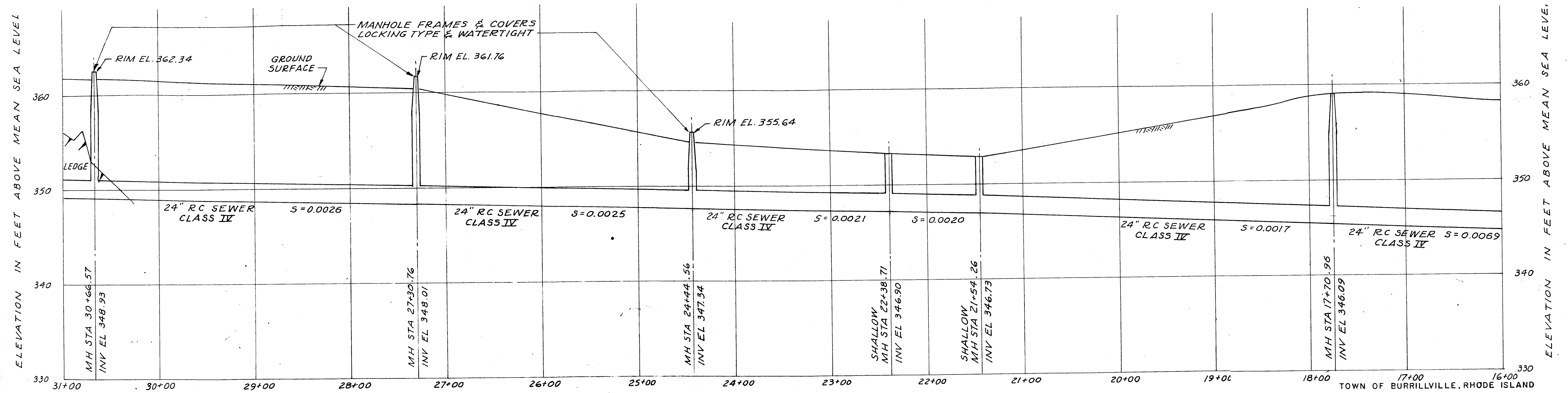
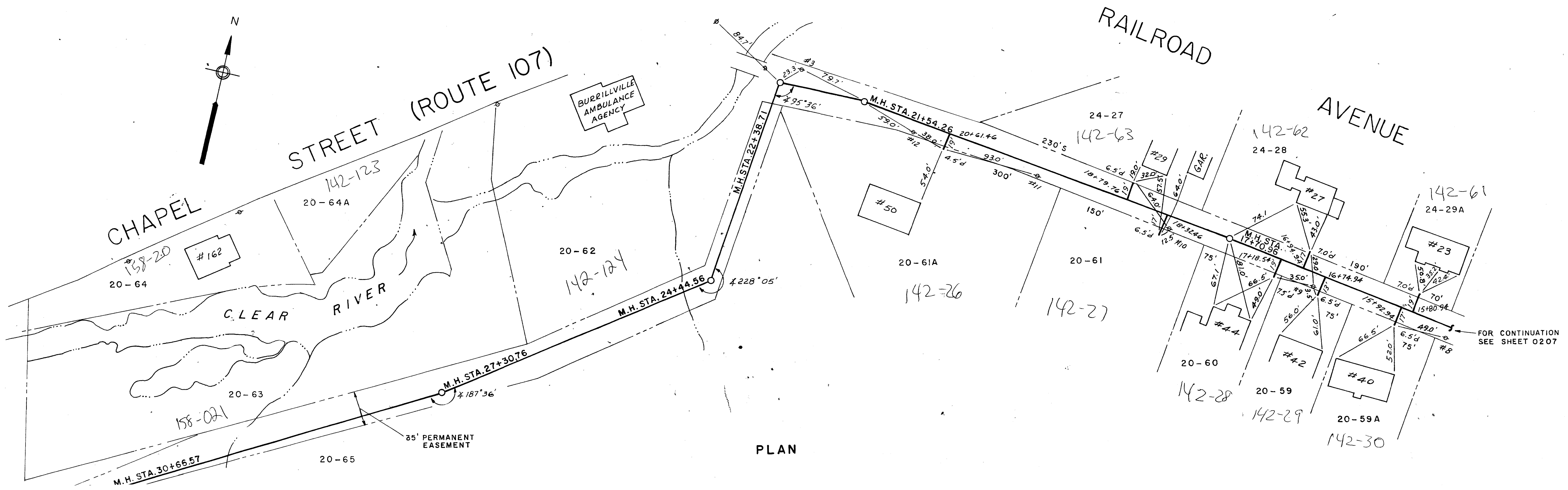
R.I. Contract No. - 2017-CB-059

FAP Nos - BRO-0354(004)

-----  
Note: The UNIT PRICE for each Item must be written in words and figures.  
-----

No.	Item Code	Quantity	Description	Unit	Unit Bid Price \$0.00	Amount (PxQ) \$0.00
113	T20.2012	28.00	12 INCH EPOXY RESIN PAVEMENT MARKINGS WHITE			
AT				LF		
114	T20.2014	430.00	4 INCH EPOXY RESIN PAVEMENT MARKINGS YELLOW			
AT				LF		
115	936.9901	1.00	MOBILIZATION			
AT				LS		

**FINAL TOTAL IS:**



PROFILE  
 SCALE: HOR. 1" = 50'  
 VER. 1" = 5'

**Railroad Avenue Bridge No. 354**  
**Appendix F - Existing Sewer Plan**

SEWER ASSESSMENT AND RECORD PLAN

MAY 1980